

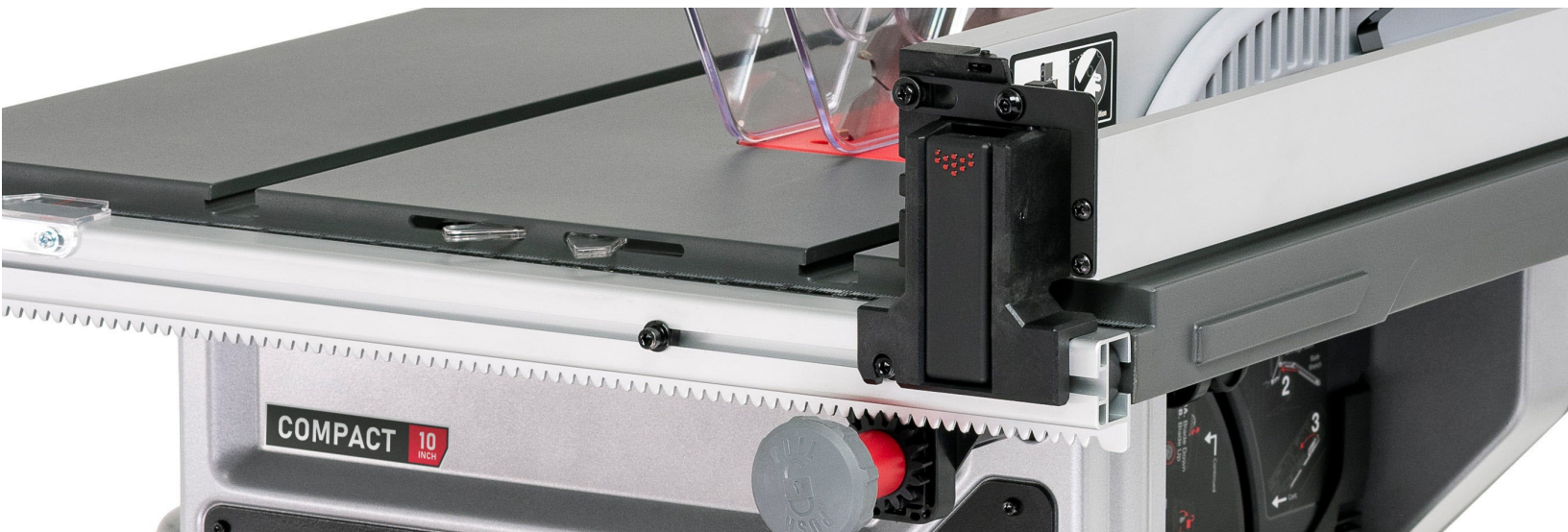


SERVICE DOCUMENT

---

## CTS Service Manual

December, 2022



Copyright SawStop, LLC

All Rights Reserved

Published, December, 2022

Updates of this manual may be available at [SawStop.com](http://SawStop.com)

SawStop, the SawStop blade logo, and the configuration of this product are either registered trademarks or trademarks of SawStop, LLC. Software copyright by SawStop, LLC. All rights reserved. Protected by one or more of the following U.S. patents: 6857345, 6997090, 7024975, 7098800, 7100483, 7197969, 7210383, 7225712, 7231856, 7284467, 7308843, 7350445, 7481140, 7536238, 7600455, 7610836, 7644645, 7707918, 7788999, 7971613, 7991503, 7997176, 8011279, 8061245, 8079292, 8079295, 8087438, 8469067, 8489223, 8505424, 8646369, 9623498, 9724840, 9844891, 10022811, 10052786, 10071499, 10118308, 10442107, 10442108, 10864651, 10875210, 10882207, 10933554, 10967536, 11027452, 11098849, 11273504. Additional U.S. and foreign patents pending.



# Warranty

SawStop warrants to the original retail purchaser of a new Compact Table Saw from an authorized SawStop distributor that the saw will be free from defects in material and workmanship for ONE YEAR from the date of purchase.

This warranty does not apply to defects arising from misuse, abuse, negligence, accidents, normal wear-and-tear, unauthorized repair or alteration, or lack of maintenance. This warranty is void if the saw or any portion of the saw is modified without the prior written permission of SawStop, LLC, or if the saw is located or has been operated outside of the country where the authorized SawStop distributor from whom the saw was purchased resides.

Please contact SawStop to take advantage of this warranty. If SawStop determines the saw is faulty in material or workmanship, and not due to misuse, abuse, negligence, accidents, normal wear-and-tear, unauthorized repair or alteration, or lack of maintenance, then SawStop will, at its expense, and upon proof of purchase, send replacement parts to the original retail purchaser necessary to cure the defect. Alternatively, SawStop will repair the saw provided the saw is returned to SawStop, shipping prepaid, with proof of purchase and within the warranty period.

SawStop disclaims any and all other express or implied warranties, including merchantability and fitness for a particular purpose. SawStop shall not be liable for death, injuries to persons or property, or incidental, consequential, contingent or special damages arising from the use of the saw.

This warranty gives you specific legal rights. You may have other rights, which, in the United States, vary from state to state.

# Revision History

Version	Date	Description
1.0	November 2022	Initial Release



# Table of Contents

Motor Cover (CTS-015) .....	1
Trunnion Motor Cover (CTS-016) .....	6
Dust Shroud (CTS-013) .....	10
Fence Rails (CTS-002, CTS-003) .....	14
Fence Rail Guides "Pucks" (CTS-005) .....	21
Rail Lock Handle (CTS-010) .....	26
Rail Lock Pinion (CTS-011) .....	31
Elevation Control Shaft (CTS-036) .....	38
Rail Lock Rocker (CTS-012) .....	44
Switch Box Assembly (CTS-038) .....	49
Alignment Block (CTS-032) .....	54
U-Joint (CTS-037) .....	60
Retraction Bracket (CTS-029) .....	65
Brake Cartridge Bracket (CTS-027) .....	72
Motor/Gear Box Assembly (CTS-042, CTS-043) .....	78
Contact SawStop .....	83





## Motor Cover (CTS-015)

Use the instructions in this chapter to install the **Motor Cover** service kit you received.



**WARNING:**

To ensure safety during maintenance, disconnect all electrical power to the saw and remove the saw blade.



**NOTE:**

For an optimal experience using this service manual, begin maintenance on your saw by starting with the chapter most directly associated with the CTS service kit you received containing replacement parts.



**IMPORTANT:**

If you have the optional stand for the CTS, remove the saw from the stand and perform this maintenance on a suitable workbench.

Certain maintenance operations may be best performed with your CTS tipped on its edge or perhaps even flipped upside down to rest on its top. As a result, many photos in this service manual do not depict the CTS in its normal, upright orientation.

## Description

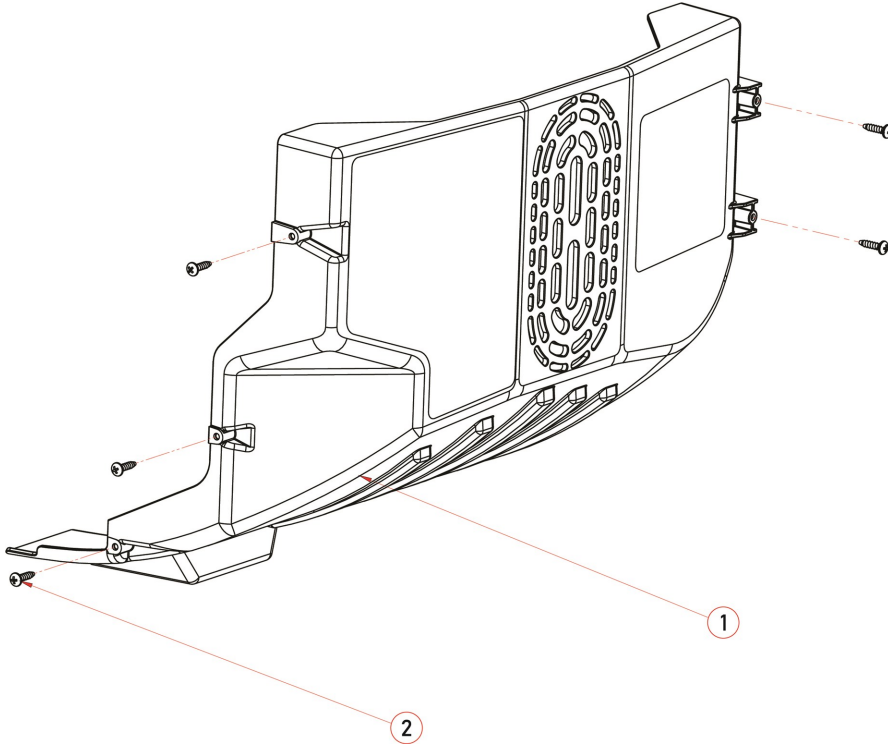
The **Motor Cover** is a curved, plastic shroud visible from the outside of your CTS. It includes an oval pattern of ventilation holes and some instructional decals on its exterior.

Below are step-by-step instructions for the disassembly required to remove and then replace the **Motor Cover**. The disassembly instructions in this section are a common prerequisite to servicing other aspects of your CTS.



## Motor Cover (CTS-015)

### Exploded View



### Service Kit Parts List (CTS-015)

ITEM	DESCRIPTION	QTY
1	Motor Cover	1
2	Screw - M4 x 1.8, 16mm, Button Head, Phillips	5

### Tools Required

#2 Phillips Head Screwdriver



### Prerequisites

None.

## Disassembly Steps

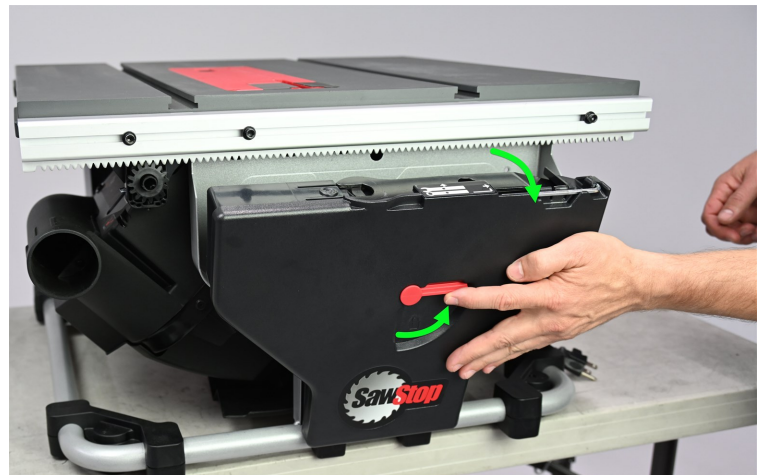


**IMPORTANT:** To ensure thorough understanding, please read the instructions all the way through before starting this procedure.

1. At the front of the saw, adjust the CTS bevel adjustment to 45 degrees.

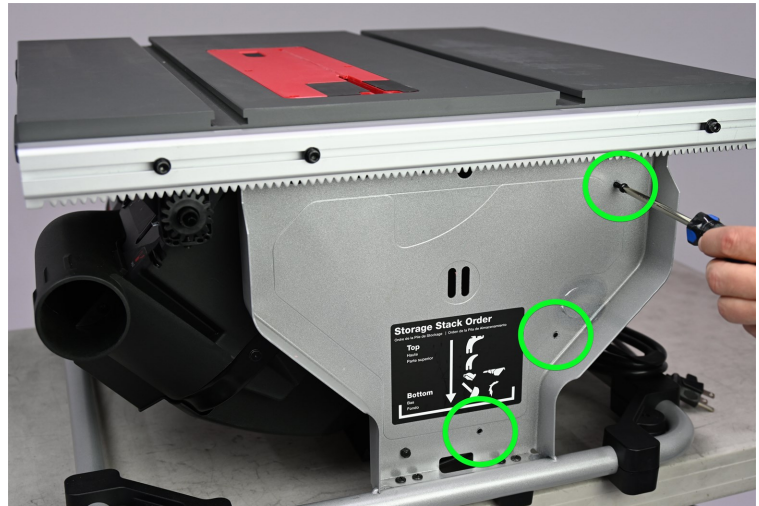


2. At the rear of the saw, unlatch and remove the Accessory Storage Compartment.

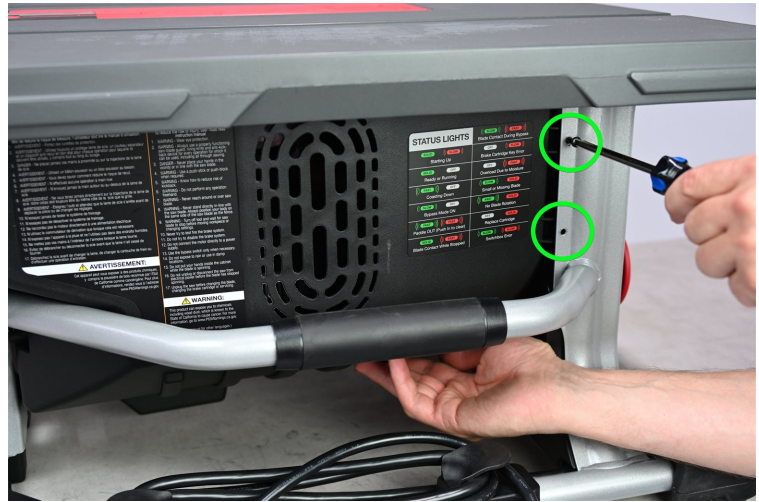


## Motor Cover (CTS-015)

3. Fasteners are now revealed that secure part of the *Motor Cover [1]* in place. Remove the three *Screws - M4 x 1.8, 16mm, Button Head, Phillips [2]* indicated in the photo.



4. From the left side of your CTS, remove the two *Screws - M4 x 1.8, 16mm, Button Head, Phillips [2]* indicated in the photo.



5. The *Motor Cover [1]* is now free. Use the handle at the left side of the saw to tilt your CTS up to rest on its right side.

## Motor Cover (CTS-015)

- Slide the motor cover down and remove it through the bottom of the frame of your CTS. Once removed, set it aside if it is to be re-installed later. Discard it if a replacement has been provided in the service kit you received from SawStop.



## Assembly Steps

- Perform the **Disassembly Steps** described immediately above in reverse order. If a service kit containing new parts to replace those removed above was provided, use only the new parts during re-assembly.
- In reverse order, re-visit each of the chapter(s) listed in the **Prerequisites** section in this chapter and perform the **Disassembly Steps** in reverse order for each.

## Inspection Steps

Confirm that the *Motor Cover [1]* is secure. All fasteners should be snug such that the cover does not move or vibrate when the CTS is running.



## Trunnion Motor Cover (CTS-016)

Use the instructions in this chapter to install the **Trunnion Motor Cover** service kit you received.



**WARNING:**

To ensure safety during maintenance, disconnect all electrical power to the saw and remove the saw blade.



**NOTE:**

For an optimal experience using this service manual, begin maintenance on your saw by starting with the chapter most directly associated with the CTS service kit you received containing replacement parts.



**IMPORTANT:**

If you have the optional stand for the CTS, remove the saw from the stand and perform this maintenance on a suitable workbench.

Certain maintenance operations may be best performed with your CTS tipped on its edge or perhaps even flipped upside down to rest on its top. As a result, many photos in this service manual do not depict the CTS in its normal, upright orientation.

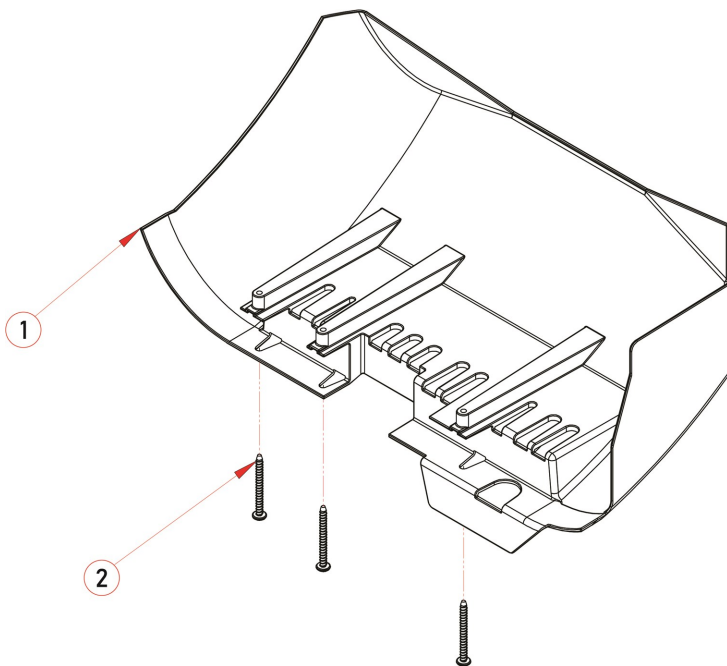
### Description

The **Trunnion Motor Cover** is a plastic shroud visible from the outside of your CTS. It acts as an extension to the Motor Cover and covers the Trunnion assembly.

Below are step-by-step instructions for the disassembly required to remove and then replace the **Trunnion Motor Cover**. The disassembly instructions in this section are a common prerequisite to servicing other aspects of your CTS.

## Trunnion Motor Cover (CTS-016)

### Exploded View



### Service Kit Parts List (CTS-016)

ITEM	DESCRIPTION	QTY
1	Trunnion Motor Cover	1
2	Screw - M4 x 1.8, 40mm, Button Head, Phillips, Thread Cutting	3

### Tools Required

#2 Phillips Head Screwdriver



### Prerequisites

Disassembly steps for maintenance associated with the service kit you received requires the following prerequisites. For now, perform ONLY the disassembly steps in the following chapters in the order listed, then return to this chapter for the remaining instructions.

1. [Motor Cover \(CTS-015\)](#)



#### NOTE:

If you have been directed to this chapter from another part of this manual, the prerequisites





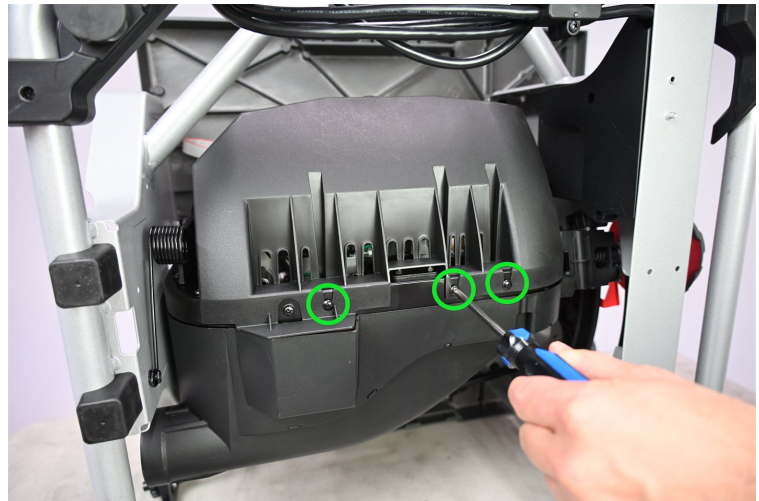
section of the chapter you began with might list one or more of the same prerequisites seen above. If you've already completed a listed disassembly, move on to the next instruction.

## Disassembly Steps



**IMPORTANT:** To ensure thorough understanding, please read the instructions all the way through before starting this procedure.

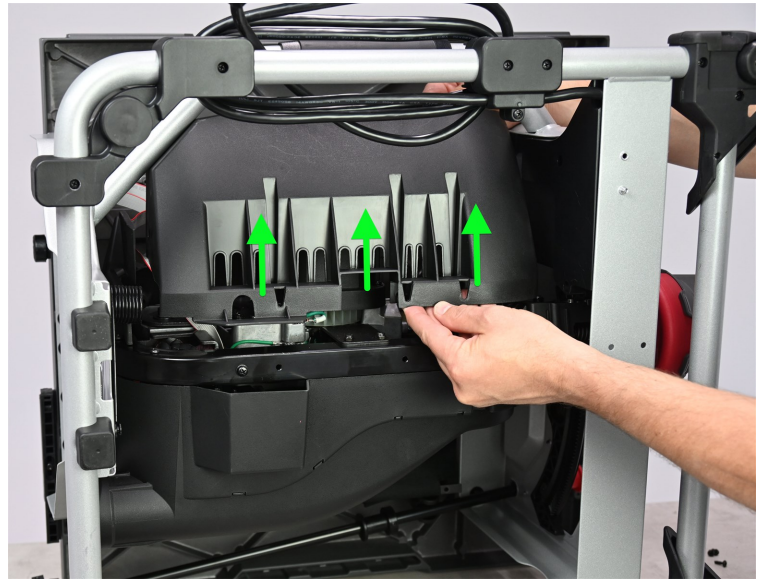
1. Remove the three *Screws - M4 x 1.8, 40mm, Button Head, Phillips, Thread Cutting [2]* at the locations indicated in the photo.





## Trunnion Motor Cover (CTS-016)

2. The *Trunnion Motor Cover [1]* is now free. Lift the cover away from the saw. Once removed, set it aside if it is to be re-installed later. Discard it if a replacement has been provided in the service kit you received from SawStop.



## Assembly Steps

1. Perform the **Disassembly Steps** described immediately above in reverse order. If a service kit containing new parts to replace those removed above was provided, use only the new parts during re-assembly.

## Inspection Steps

1. Confirm that the *Trunnion Cover [1]* is secure. All fasteners should be snug such that the cover does not move or vibrate when the CTS is running.



## Dust Shroud (CTS-013)

Use the instructions in this chapter to install the **Dust Shroud** service kit you received.



**WARNING:**

To ensure safety during maintenance, disconnect all electrical power to the saw and remove the saw blade.



**NOTE:**

For an optimal experience using this service manual, begin maintenance on your saw by starting with the chapter most directly associated with the CTS service kit you received containing replacement parts.



**IMPORTANT:**

If you have the optional stand for the CTS, remove the saw from the stand and perform this maintenance on a suitable workbench.

Certain maintenance operations may be best performed with your CTS tipped on its edge or perhaps even flipped upside down to rest on its top. As a result, many photos in this service manual do not depict the CTS in its normal, upright orientation.

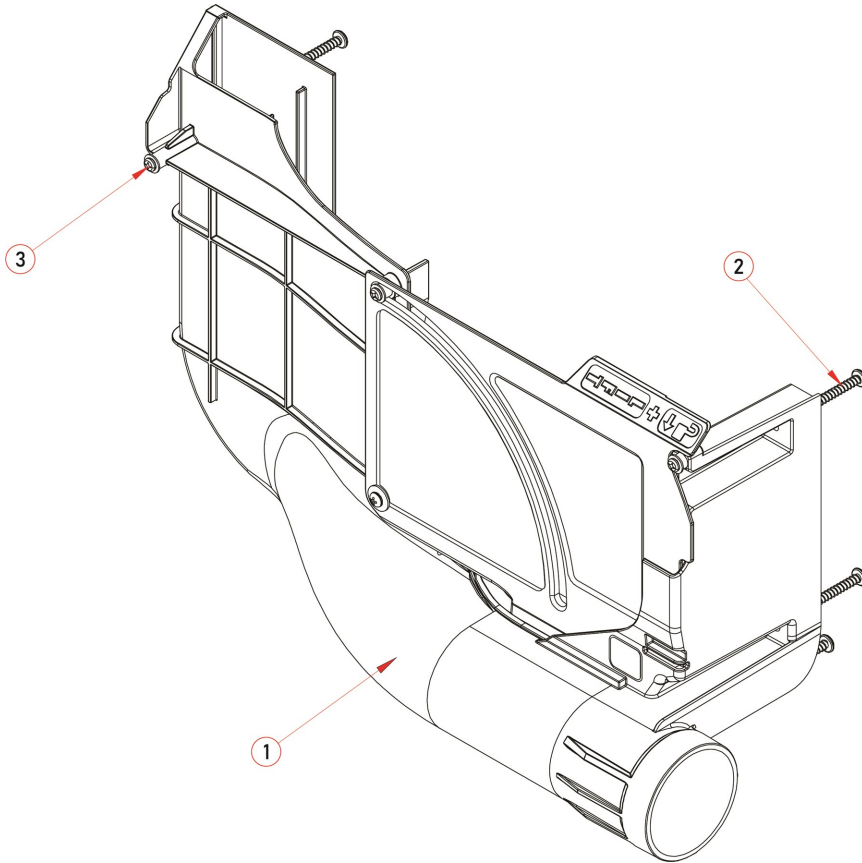
## Description

The Dust Shroud is part of the plastic housing visible from the outside of your CTS. A prominent portion of the molding includes a 2.5" dust port to which a dust collection device can be attached.

Below are step-by-step instructions for the disassembly required to remove and then replace the Dust Shroud. The disassembly instructions in this section are a common prerequisite to servicing other aspects of your CTS.

## Dust Shroud (CTS-013)

### Exploded View



### Service Kit Parts List (CTS-013)

ITEM	DESCRIPTION	QTY
1	Dust Shroud Assembly	1
2	Screw - M5x2.2, 45mm, Pan Head, Phillips, Thread Cutting	5
3	Bolt -M4x0.7, 8mm, Flat Washer, Pan Head, Phillips	3

### Tools Required

#2 Phillips Screwdriver



### Prerequisites

Disassembly steps for maintenance associated with the service kit you received requires the following prerequisites. For now, perform ONLY the disassembly steps in the following chapters in the order listed, then

## Dust Shroud (CTS-013)

return to this chapter for the remaining instructions.

1. [Trunnion Motor Cover \(CTS-016\)](#)
2. [Motor Cover \(CTS-015\)](#)



### NOTE:

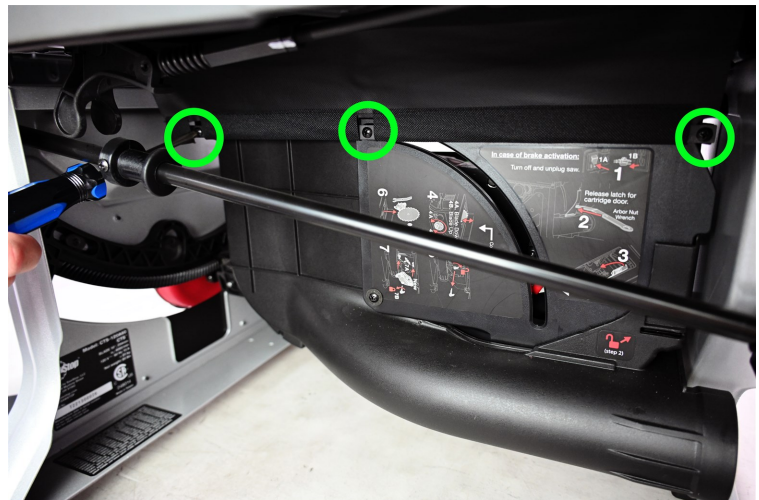
If you have been directed to this chapter from another part of this manual, the prerequisites section of the chapter you began with might list one or more of the same prerequisites seen above. If you've already completed a listed disassembly, move on to the next instruction.

## Disassembly Steps



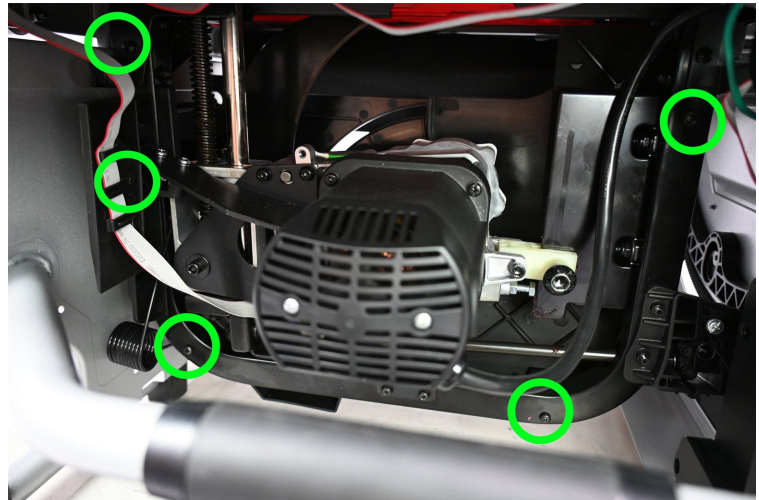
**IMPORTANT:** To ensure thorough understanding, please read the instructions all the way through before starting this procedure.

1. Remove the three *Bolts-M4x0.7, 8mm, Flat Washer, Pan Head, Phillips [3]* indicated in the photo.



## Dust Shroud (CTS-013)

1. Remove the five *Screws - M5x2.2, 45mm, Pan Head, Phillips, Thread Cutting [2]* located around the perimeter of the square tube, inner frame of your CTS. See screw locations indicated in the photo.



3. The *Dust Shroud Assembly [1]* is now free and can be removed. Once removed, set it aside if it is to be re-installed later. Discard it if a replacement has been provided in the service kit you received from SawStop.



## Assembly Steps

1. Perform the **Disassembly Steps** described immediately above in reverse order. If a service kit containing new parts to replace those removed above was provided, use only the new parts during re-assembly.
2. In reverse order, re-visit each of the chapter(s) listed in the **Prerequisites** section in this chapter and perform the **Disassembly Steps** in reverse order for each.

## Inspection Steps

1. Confirm that the *Dust Shroud Assembly [1]* is secure. All fasteners should be snug such that the assembly does not move or vibrate when the CTS is running.
2. Confirm that the dust door slides freely.



## Fence Rails (CTS-002, CTS-003)

Use the instructions in this chapter to install the aluminum extruded fence rail (front or rear) service kit you received.



**WARNING:**

To ensure safety during maintenance, disconnect all electrical power to the saw and remove the saw blade.



**NOTE:**

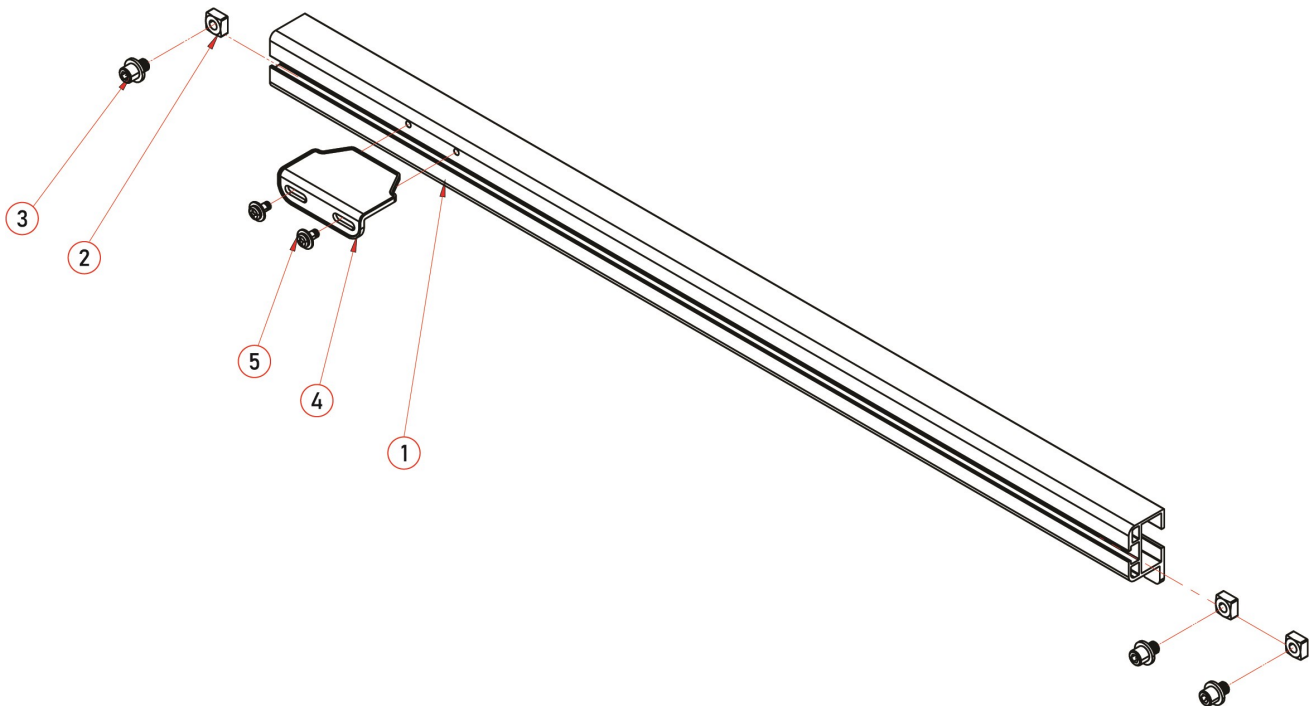
For an optimal experience using this service manual, begin maintenance on your saw by starting with the chapter most directly associated with the CTS service kit you received containing replacement parts.

### Description

The adjustable aluminum extrusions that ride on the front and rear edge of the saw table, serve the purpose of carrying the fence to adjust its distance from the saw blade.

Below are step-by-step instructions for the disassembly required to remove and then replace the fence rails.

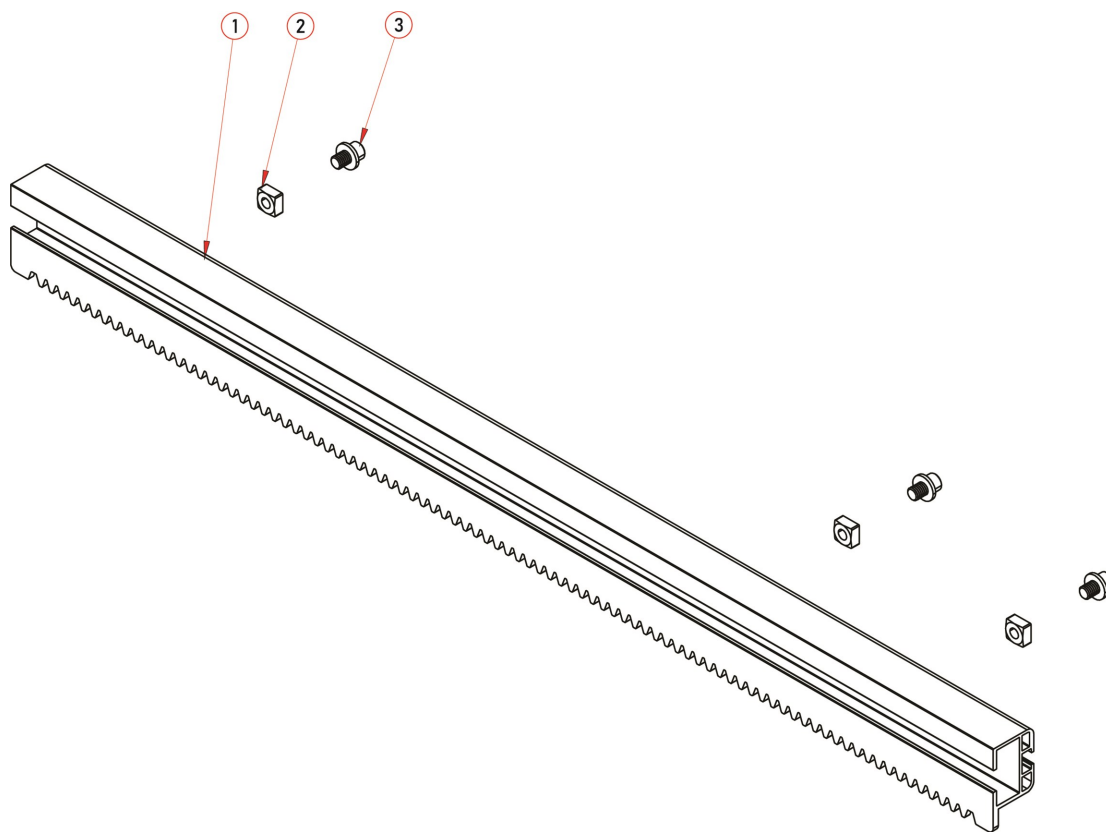
### Exploded View - Front Fence Rail



**Service Kit Parts List - Front Rail (CTS-002)**

ITEM	DESCRIPTION	QTY
1	Rail - Front	1
2	Square Nut - M6 x 1.0mm	3
3	Bolt - M6 x 1.0mm, Hex Flange Head	3
4	Lens - Fence Position Indicator	1
5	Bolt - M4x0.7mm, Flat Washer, Pan Head, Phillips	2

**Exploded View - Rear Fence Rail**



**Service Kit Parts List - Rear Rail (CTS-003)**

ITEM	DESCRIPTION	QTY
1	Rail - Rear	1
2	Square Nut - M6 x 1.0mm	3
3	Bolt - M6 x 1.0mm, Hex Flange Head	3



### Tools Required

4mm Allen Wrench

#2 Phillips Head Screwdriver



### Prerequisites

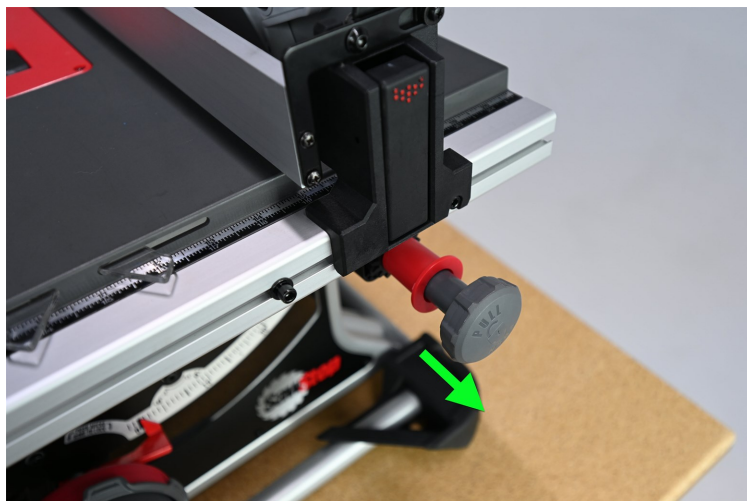
None.

### Disassembly Steps



**IMPORTANT:** To ensure thorough understanding, please read the instructions all the way through before starting this procedure.

1. Unlock the fence rails.



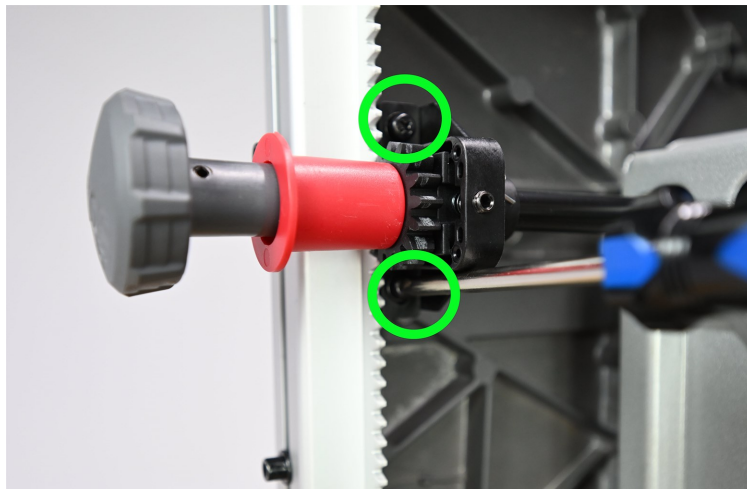


## Fence Rails (CTS-002, CTS-003)

2. Unlatch and remove the fence assembly.



3. Release the front of the [Trunnion, Rail Lock Assembly](#) from the saw by removing the two screws shown using a #2 Phillips screwdriver. Perform this step at both front and rear of your CTS.



## Fence Rails (CTS-002, CTS-003)

4. Grip the fence rail and slide it to the left or right to remove it from the saw.

The picture at right depicts removal of the front rail. The process for the removal of the rear rail is the same.

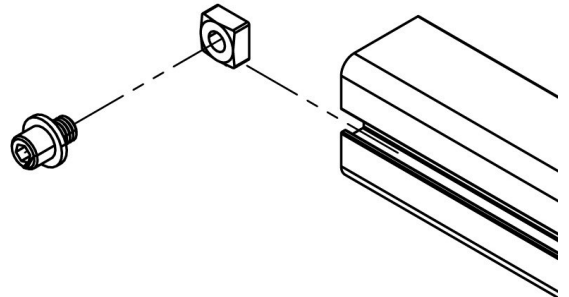


## Assembly Steps

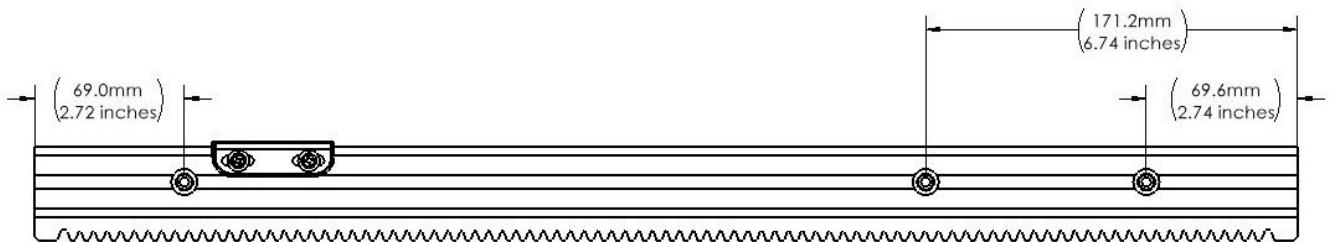
1. Perform the **Disassembly Steps** described immediately above in reverse order but this time, you'll use the new parts contained in the service kit you received from SawStop (If provided).

2. Install the fasteners into the outward facing T-track of the fence rail extrusion. Place the fasteners at the spacing illustrated below. (Measurements expressed in Millimeters.)

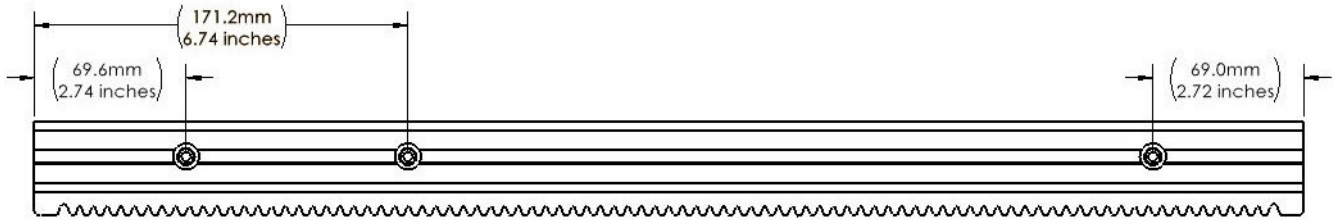
Once positioned per the specification below, tighten using a 4mm Allen wrench.



## Front Rail Hardware Placement



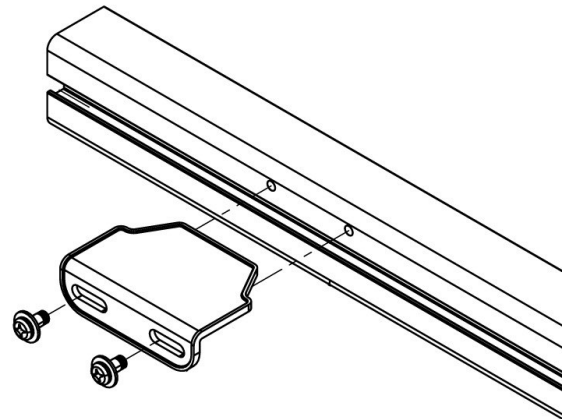
## Rear Rail Hardware Placement



### IMPORTANT:

Precision placement of this hardware is crucial to the cutting accuracy of your CTS. See Inspection Steps below for more information.

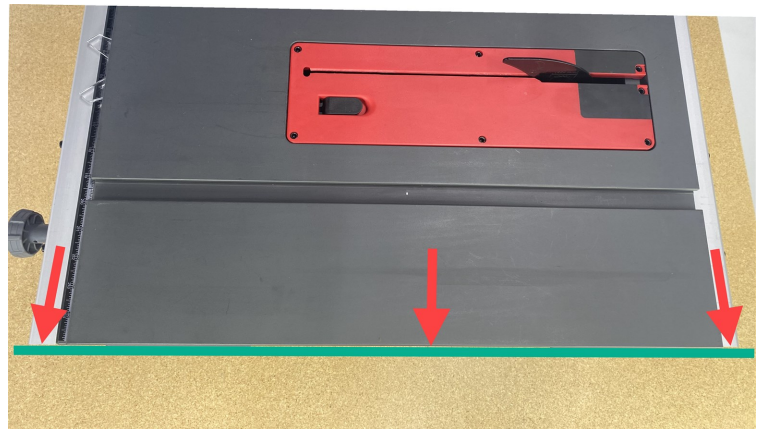
3. If a front fence rail was included in your service kit, install the *Lens - Fence Position Indicator* with the included *Bolts - M4x0.7mm, Flat Washer, Pan Head* using a #2 Phillips screw driver.



## Inspection Steps

1. Ensure that both fence rails are aligned with each other:  
Using the left or right edge of the saw table as a reference point, use the fence adjustment knob to flush one end of the fence rails with the edge of the saw table. Confirm that both front and rear rails are precision flush with the edge of the saw table.

Adjust as needed by removing the screws shown in Step 3 of the **Disassembly Steps** in this chapter, align the ends of the rails, then re-attach the trunnion mounts to your CTS.



## Fence Rails (CTS-002, CTS-003)

2. Confirm that the fence seats properly onto the fence rails:

Replace the fence and confirm that the slots at either end of the fence align properly with the fence rail hardware you just installed in the previous section.

3. Align the fence to the miter slot using the process found in the [CTS Owner's Manual](#). A companion [video](#) is also available detailing the process for aligning the fence and the blade to the miter slot.

Watch: [SawStop Service Tip: Aligning the Blade and Rip Fence to the Miter Slots on the Compact Table Saw](#)



## Fence Rail Guides "Pucks" (CTS-005)

Use the instructions in this chapter to install the **Puck Service Kit** you received.



**WARNING:**

To ensure safety during maintenance, disconnect all electrical power to the saw and remove the saw blade.



**NOTE:**

For an optimal experience using this service manual, begin maintenance on your saw by starting with the chapter most directly associated with the CTS service kit you received containing replacement parts.

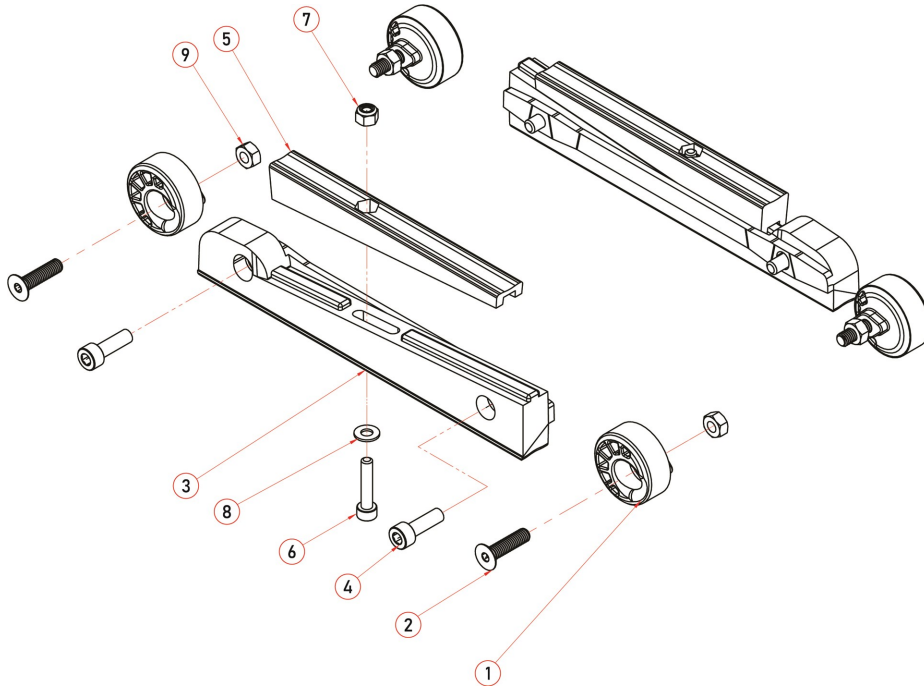
### Description

"Pucks" are a series of plastic guides for the aluminum fence rails. They attach to the front and rear lip of the saw table of your CTS. The "end" pucks (as described in the parts list below) are round and are positioned nearest the left and right ends of the saw table. The "inner" puck (consisting of 2 pieces) attaches more toward the middle of the edge of the saw table and is positioned between the circular "end" pucks.

Below are step-by-step instructions for the disassembly required to expose the existing pucks, remove them and finally replace them using the fresh parts supplied in the service kit you received.

Fence Rail Guides "Pucks" (CTS-005)

**Exploded View**



**Service Kit Parts List (CTS-005)**

ITEM	DESCRIPTION	QTY
1	Puck - End, Inner Rail	4
2	Bolt - M5 x 0.8, 14mm, Flat Head, Socket	4
3	Puck - Base, Inner Rail	2
4	Bolt - M5 x 0.8, 16mm, Socket Head Cap, Loctite	4
5	Puck - Upper Inner Rail	2
6	Bolt - M4x0.7, 20mm, Socket Head Cap	2
7	Lock Nut - M4 x 0.7	2
8	Flat Washer - M4, 9mm x 0.8	2
9	Nut - M5 x 0.8	4

## Tools Required

3mm Allen Wrench



4mm Allen Wrench



#2 Phillips Head Screwdriver



8mm Socket Wrench



## Prerequisites

Disassembly steps for maintenance associated with the service kit you received requires the following prerequisites. For now, perform ONLY the disassembly steps in the following chapters in the order listed, then return to this chapter for the remaining instructions.

1. [Fence Rails \(CTS-002, CTS-003\)](#)



**NOTE:**

If you have been directed to this chapter from another part of this manual, the prerequisites section of the chapter you began with might list one or more of the same prerequisites seen above. If you've already completed a listed disassembly, move on to the next instruction.



## Disassembly Steps

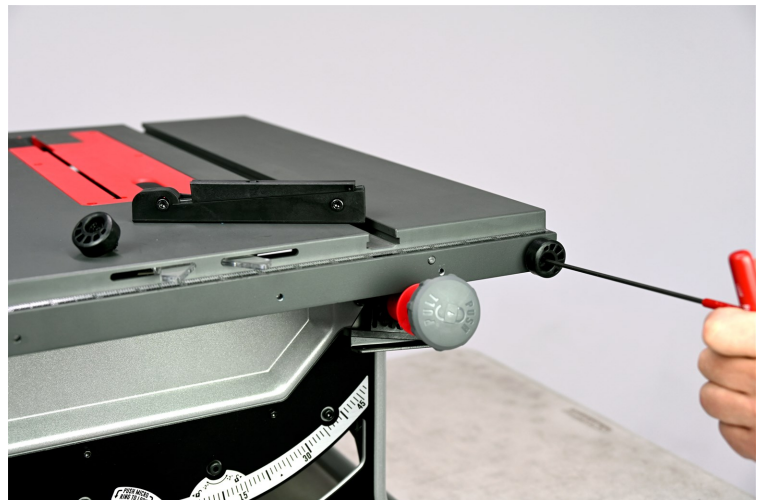


**IMPORTANT:** To ensure thorough understanding, please read the instructions all the way through before starting this procedure.

1. Begin by removing the worn circular pucks from the front of the saw. Remove the *Lock Nuts - M4 x 0.7 [7]* behind both *Pucks - End, Inner Rail [1]* using a 3mm Allen Wrench at the bolt and an 8mm wrench at the nut.



2. Remove the *Bolts - M5 x 0.8, 14mm, Flat Head, Socket [2]* using the 3mm Allen wrench and discard them along with the nuts you removed in step 1.





## Fence Rail Guides "Pucks" (CTS-005)

3. Use a 4mm Allen wrench to remove Bolts - M5 x 0.8, 16mm, Socket Head Cap, Loctitee [4] and remove Puck - Base, Inner Rail [3] and [5].



4. Repeat steps 2-4 for removing the rail guides (pucks) from the rear of the saw.
5. Once removed, set all the parts aside if they are to be reinstalled. If new parts have been provided in the service kit you received from SawStop, discard all of the original hardware (including nuts and bolts) and use only new parts provided with the service kit.

## Assembly Steps

1. Perform the **Disassembly Steps** described immediately above in reverse order. If a service kit containing new parts to replace those removed above was provided, use only the new parts during re-assembly.
2. In reverse order, re-visit each of the chapter(s) listed in the **Prerequisites** section in this chapter and perform the **Disassembly Steps** in reverse order for each.

## Inspection Steps

A separate procedure bulletin dedicated to the inspection and alignment of the fence rail guides is available on the CTS product page at [www.sawstop.com](http://www.sawstop.com). Follow the instructions in the [Compact Table Saw Puck Adjustment Procedure](#) bulletin to ensure proper installation, alignment and performance of the fence rails.



### IMPORTANT:

To ensure best performance of your Compact Table Saw, DO NOT SKIP this inspection procedure. Use the link above to access the companion instruction.

## Rail Lock Handle (CTS-010)

Use the instructions in this chapter to install the **Rail Lock Handle** service kit that you received.



**WARNING:**

To ensure safety during maintenance, disconnect all electrical power to the saw and remove the saw blade.



**NOTE:**

For an optimal experience using this service manual, begin maintenance on your saw by starting with the chapter most directly associated with the CTS service kit you received containing replacement parts.



**IMPORTANT:**

If you have the optional stand for the CTS, remove the saw from the stand and perform this maintenance on a suitable workbench.

Certain maintenance operations may be best performed with your CTS tipped on its edge or perhaps even flipped upside down to rest on its top. As a result, many photos in this service manual do not depict the CTS in its normal, upright orientation.

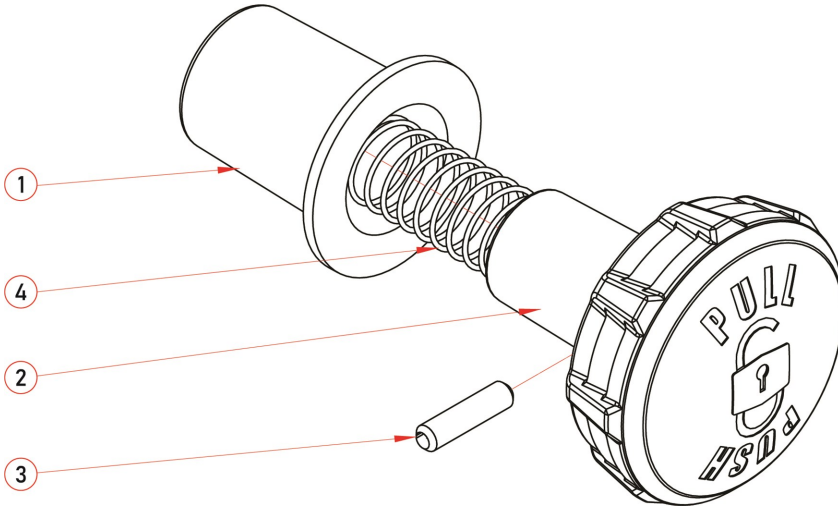
### Description

The **Rail Lock Handle** is the knob use for locking and unlocking the position of the fence after the fence has been adjusted to the desired position.

Below are step-by-step instructions for the disassembly required to remove and then replace the **Rail Lock Handle**. The disassembly instructions in this chapter also serve as a prerequisite to servicing other aspects of your CTS.

## Rail Lock Handle (CTS-010)

### Exploded View



### Service Kit Parts List (CTS-010)

ITEM	DESCRIPTION	QTY
1	Sleeve - Rail Lock Handle	1
2	Handle - Rail Lock	1
3	Pin - Spring, 4 x 18	1
4	Spring - Rail Lock, Handle	1

### Tools Required

Hammer



3mm Punch



### Prerequisites

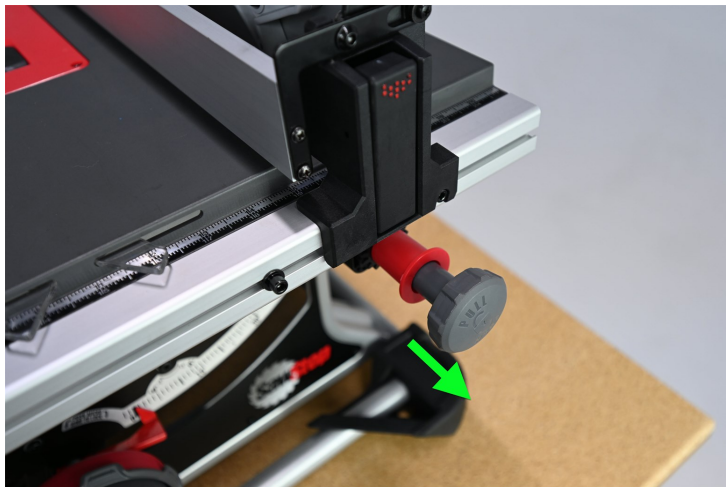
None.

## Disassembly Steps

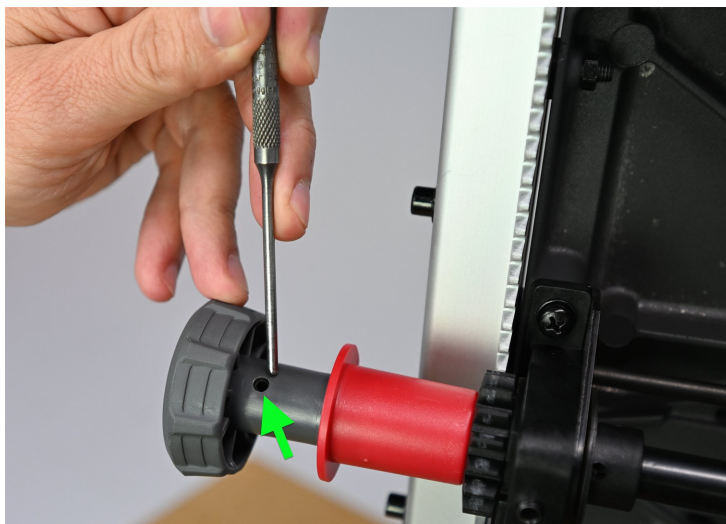


**IMPORTANT:** To ensure thorough understanding, please read the instructions all the way through before starting this procedure.

1. Unlock the fence position by pulling the *Handle -Rail Lock [2]* outward.

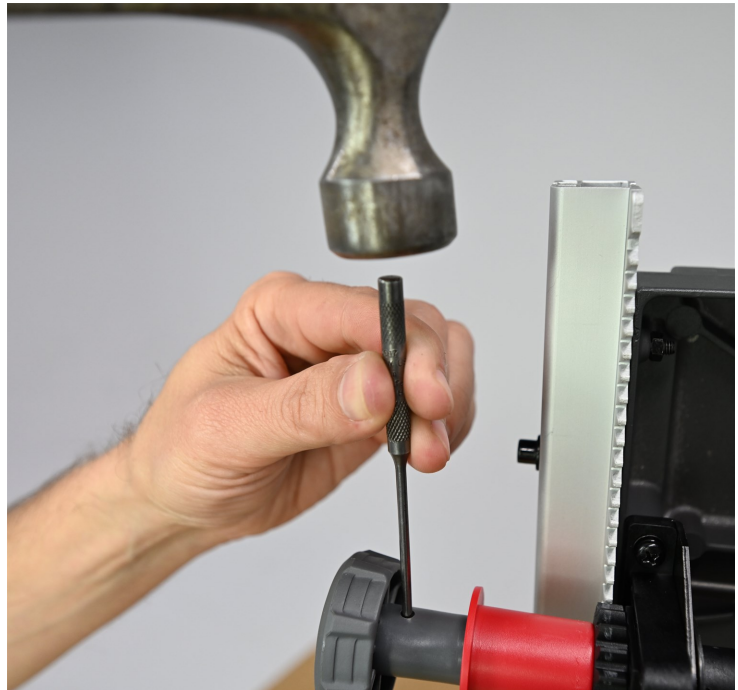


2. Place the 3mm punch against the *Pin - Spring, 4 x 18 [3]*.



## Rail Lock Handle (CTS-010)

3. Strike the punch with a hammer until the pin is removed. Consider cutting a piece of scrap wood to support the shaft during this step.



4. Gently remove the punch then remove the *Handle - Rail Lock [2]*, the *Spring - Rail Lock, Handle [4]* and finally the *Sleeve - Rail Lock Handle [1]* from the shaft.

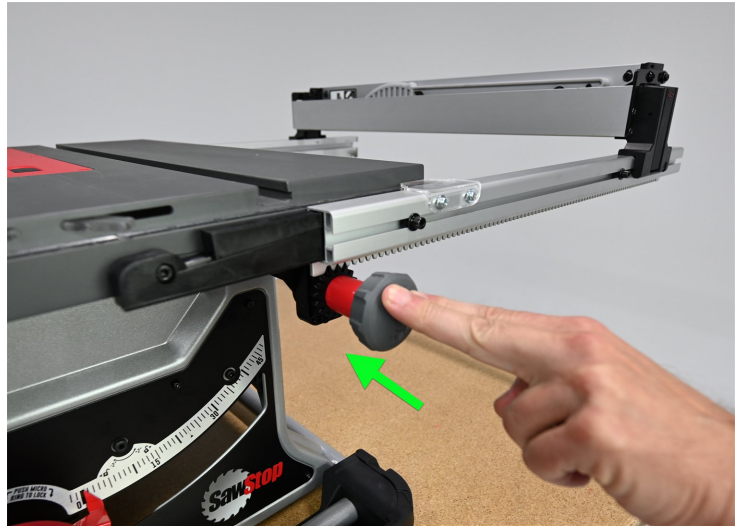
**TIP:** In anticipation of the spring force behind the handle, take hold of the handle before removing the punch.

## Assembly Steps

1. Place the red, *Sleeve- Rail Lock Handle [1]* over the shaft followed by adding the *Spring - Rail Lock, Handle [4]* to the shaft.
2. Place the grey, *Handle-Rail Lock [2]* over the end of the shaft and align the hole in the shank of the handle with the hole in the metal shaft.
3. Insert the *Pin- Spring, 4 x 18 [3]* into the aligned holes and tap it into place using a hammer and 3mm punch.

## Inspection Steps

1. Confirm [Rail Lock Handle](#) operation to verify positive lock and unlock functionality. It should not slide freely but offer some resistance when the knob is pushed in (lock) or pulled out (unlock).



Adjust the rocker tension adjustment nut shown until the lock and unlock force is restored to its former behavior prior to performing this maintenance.



## Rail Lock Pinion (CTS-011)

Use the instructions in this chapter to install the **Rail Lock Pinion** service kit that you received.



**WARNING:**

To ensure safety during maintenance, disconnect all electrical power to the saw and remove the saw blade.



**NOTE:**

For an optimal experience using this service manual, begin maintenance on your saw by starting with the chapter most directly associated with the CTS service kit you received containing replacement parts.



**IMPORTANT:**

If you have the optional stand for the CTS, remove the saw from the stand and perform this maintenance on a suitable workbench.

Certain maintenance operations may be best performed with your CTS tipped on its edge or perhaps even flipped upside down to rest on its top. As a result, many photos in this service manual do not depict the CTS in its normal, upright orientation.

## Description

The **Rail Lock Pinion** includes the necessary hardware and apparatus (adjustment knob, shaft, sprockets, mounts, etc.) to adjust the distance between the saw blade and fence.

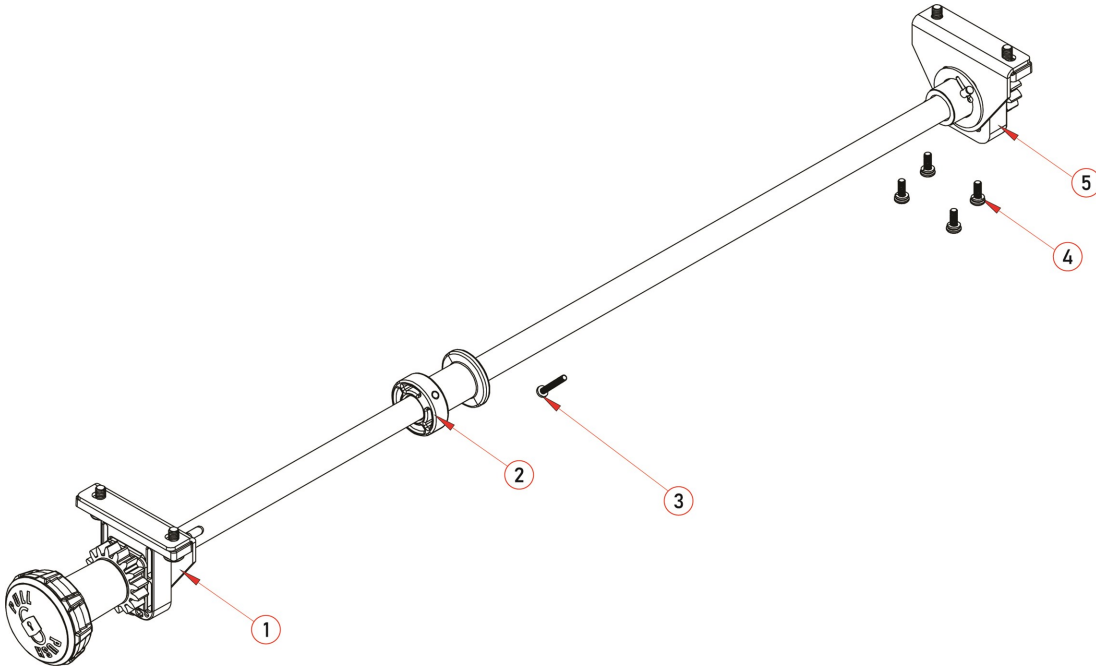
Below are step-by-step instructions for the disassembly required to remove and then replace the **Rail Lock Pinion**. The disassembly instructions in this chapter also serve as a prerequisite to servicing other aspects of your CTS.





## Rail Lock Pinion (CTS-011)

### Exploded View



### Service Kit Parts List (CTS-011)

ITEM	DESCRIPTION	QTY
1	Main Rail Lock Pinion Assembly	1
2	Guide - Shaft Bushing, Rocker	1
3	Bolt - M4 x 0.7, 30mm, Button Head, Phillips	1
4	Bolt - M5x0.8, 14mm, Locktite, Lock Washer, Button Head, Phillips	4
5	Rear Rail Lock Pinion Assembly	1

### Tools Required

Needle Nose Pliers

#2 Phillips Head Screwdriver





## Prerequisites

Disassembly steps for maintenance associated with the service kit you received requires the following prerequisites. For now, perform ONLY the disassembly steps in the following chapters in the order listed, then return to this chapter for the remaining instructions.

1. [Rail Lock Handle \(CTS-010\)](#)



**NOTE:**

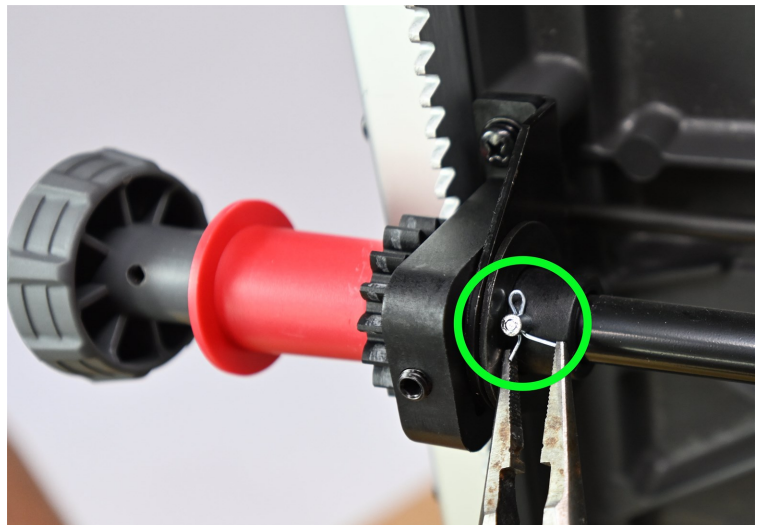
If you have been directed to this chapter from another part of this manual, the prerequisites section of the chapter you began with might list one or more of the same prerequisites seen above. If you've already completed a listed disassembly, move on to the next instruction.

## Disassembly Steps



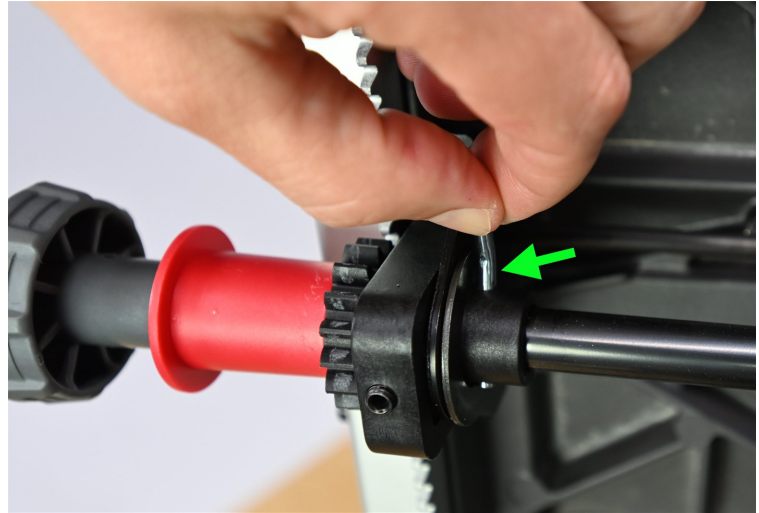
**IMPORTANT:** To ensure thorough understanding, please read the instructions all the way through before starting this procedure.

1. From just under the front edge of the saw table, remove the cotter pin using needle nose pliers. Set the cotter pin aside for later reinstallation.

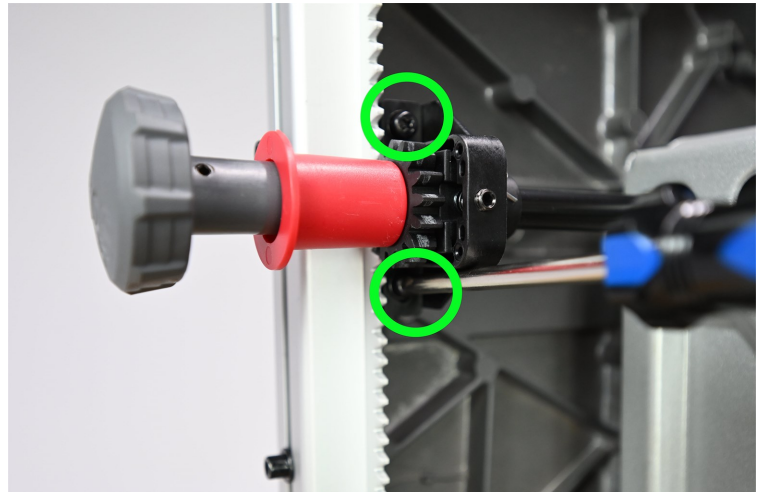


## Rail Lock Pinion (CTS-011)

2. Next, remove the angled clevis pin. Set the clevis pin aside for later reinstallation.



3. Using a #2 Phillips head screwdriver, remove both *Bolt - M5x0.8, 14mm, Loctite, Lock Washer, Button Head, Phillips [4]* from the locations indicated in the photo.



4. Repeat step 3 at the other end of the trunnion assembly (rear of the saw) to separate the assembly from your CTS.
5. Remove components from the portion of the shaft forward of the frame. (See the exploded view above and remove Item 1).

## Rail Lock Pinion (CTS-011)

6. Draw the shaft with its remaining components out of the frame of the saw from the rear.  
The highlighted area shows where the components listed in Step 5 that you were instructed to remove from the shaft were previously mounted.



## Assembly Steps

Perform the **Disassembly Steps** described immediately above in reverse order but this time, you'll use only the new parts contained in the service kit you received from SawStop (if supplied). There are certain details to be observed during re-assembly:

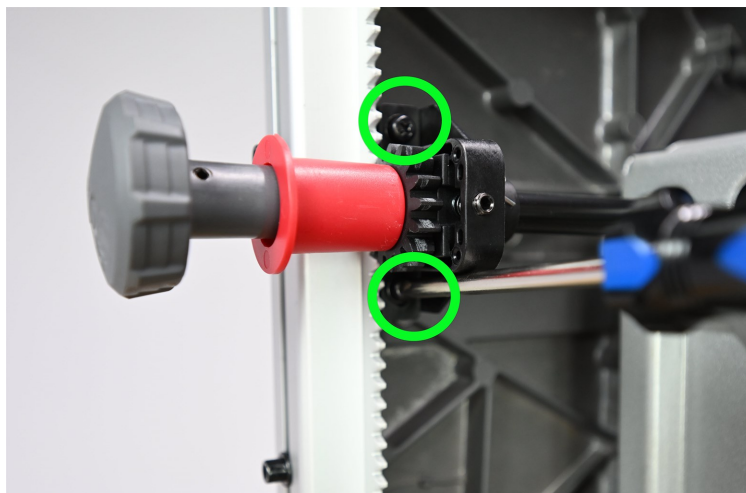
1. Slide the shaft in from the rear of the saw and into the frame assembly.
2. Slide the *Guide - Shaft Bushing, Rocker [2]* from rear and secure it to the tube with *Bolt - M4 x 0.7, 30mm, Button Head, Phillips [3]* using a #2 Phillips Head Screwdriver.

Be sure the bolt [3] is aligned with the hole in the shaft before tightening it.



## Rail Lock Pinion (CTS-011)

3. Ensure the front and rear aluminum extruded fence rails are aligned with one edge of the saw table, then re-attach the front and rear vertical shaft alignment guides using a #2 Phillips head screwdriver and four *Bolt - M5x0.8, 14mm, Loctite, Lock Washer, Button Head, Phillips [4]*.



4. In reverse order, re-visit each of the chapter(s) listed in the **Prerequisites** section in this chapter and perform the **Disassembly Steps** reverse order for each.

## Inspection Steps

1. Confirm [Rail Lock Handle](#) operation to verify positive lock and unlock functionality. It should not slide freely but offer some resistance when the knob is pushed in (lock) or pulled out (unlock).



Adjust the rocker tension adjustment nut shown until the lock and unlock force is restored to its former behavior prior to performing this maintenance.





## Elevation Control Shaft (CTS-036)

Use the instructions in this chapter to install the **Elevation Control Shaft** service kit you received.



**WARNING:**

To ensure safety during maintenance, disconnect all electrical power to the saw and remove the saw blade.



**NOTE:**

For an optimal experience using this service manual, begin maintenance on your saw by starting with the chapter most directly associated with the CTS service kit you received containing replacement parts.



**IMPORTANT:**

If you have the optional stand for the CTS, remove the saw from the stand and perform this maintenance on a suitable workbench.

Certain maintenance operations may be best performed with your CTS tipped on its edge or perhaps even flipped upside down to rest on its top. As a result, many photos in this service manual do not depict the CTS in its normal, upright orientation.

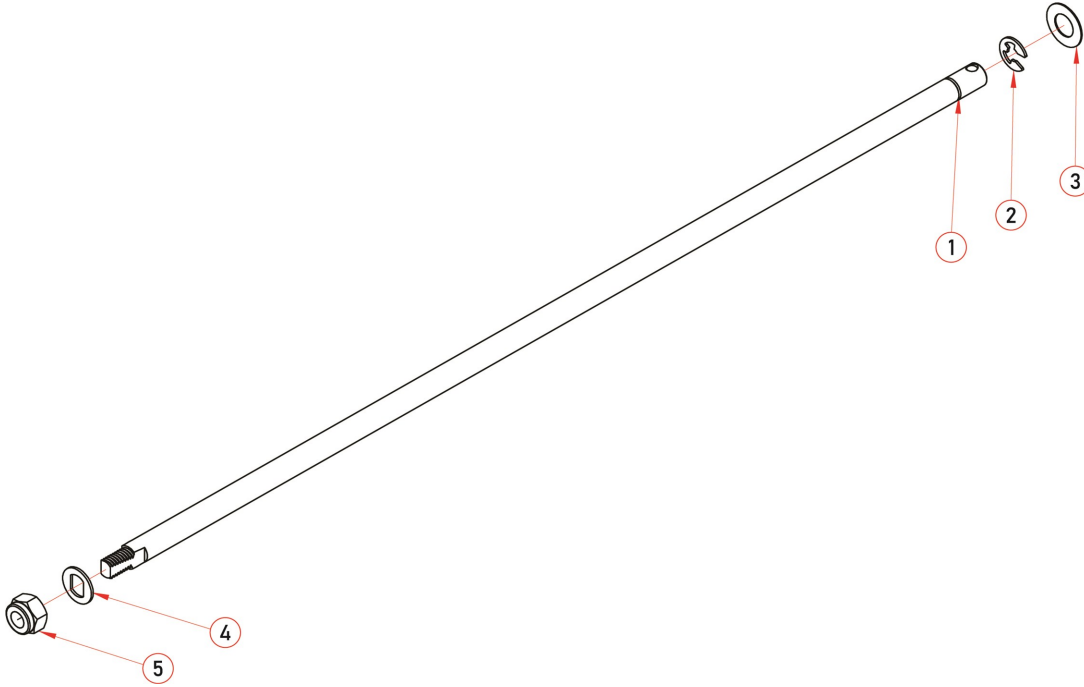
### Description

The **Elevation Control Shaft** is part of the mechanism that facilitates setting the cutting height of the saw blade on your CTS.

Below are step-by-step instructions for the disassembly required to remove and then replace the **Elevation Control Shaft**.

## Elevation Control Shaft (CTS-036)

### Exploded View



### Service Kit Parts List (CTS-036)

ITEM	DESCRIPTION	QTY
1	Elevation Control Shaft	1
2	Retaining Ring - E-Style, 7mm	1
3	Flat Washer - M9, 18mm x 0.5mm	1
4	Washer - Elevation Handle	1
5	Lock Nut - M8 x 1.25mm	1



## Tools Required

Needle Nose Pliers



13mm Socket Wrench



Flat Head Screwdriver



2mm Allen Wrench



## Prerequisites

Disassembly steps for maintenance associated with the service kit you received requires the following prerequisites. For now, perform ONLY the disassembly steps in the following chapters in the order listed, then return to this chapter for the remaining instructions.

1. [Dust Shroud \(CTS-013\)](#)



**NOTE:**

If you have been directed to this chapter from another part of this manual, the prerequisites section of the chapter you began with might list one or more of the same prerequisites seen above. If you've already completed a listed disassembly, move on to the next instruction.

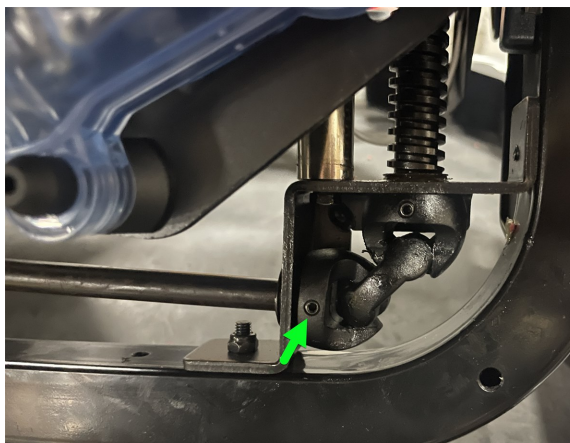
## Disassembly Steps



**IMPORTANT:** To ensure thorough understanding, please read the instructions all the way through before starting this procedure.

## Elevation Control Shaft (CTS-036)

1. Watch end of the *Elevation Control Shaft* [1] that is fitted to the U-joint as you rotate the elevation adjustment at the front of your CTS. Stop rotating when the head of the set screw that pins the shaft to the [U-Joint](#) is visible.



2. Using a 2mm Allen wrench, remove the set screw.
3. Using a flat head screwdriver, remove the cap from the center of the bevel and elevation adjustment knob.

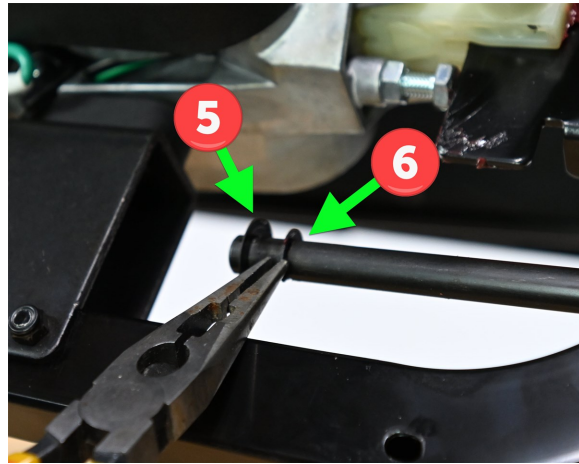


4. While holding the adjustment knob still with one hand, use a 13mm socket wrench to remove the now exposed *Lock Nut - M8 x 1.25mm* [5].



## Elevation Control Shaft (CTS-036)

5. Draw the *Elevation Control Shaft [1]* forward a few inches (through the front of the saw), then remove the *Flat Washer - M9, 18mm x .5mm [3]*.
6. Also, remove the *Retaining Ring - E-Style, 7mm [2]* using needle nose pliers or a flat head screwdriver.



7. You can now remove the shaft completely. Once removed, set it aside if it is to be re-installed later. Discard it if a replacement has been provided in the service kit you received from SawStop.



## Assembly Steps

1. Perform the **Disassembly Steps** described immediately above in reverse order. If a service kit containing new parts to replace those removed above was provided, use only the new parts during re-assembly.
2. In reverse order, re-visit each of the chapter(s) listed in the **Prerequisites** section in this chapter and perform the **Disassembly Steps** in reverse order for each.

## Inspection Steps

1. When re-installing the set screw to join the elevation shaft to the U-joint, confirm that the set screw is flush and does not protrude from either side of the U-Joint.
2. Rotate the bevel and elevation adjustment knob through its full range of motion to confirm the blade height can be fully extended, and fully retracted. The operation of adjustment should be smooth and does not bind.



## Rail Lock Rocker (CTS-012)

Use the instructions in this chapter to install the **Rail Lock Rocker** service kit you received.



**WARNING:**

To ensure safety during maintenance, disconnect all electrical power to the saw and remove the saw blade.



**NOTE:**

For an optimal experience using this service manual, begin maintenance on your saw by starting with the chapter most directly associated with the CTS service kit you received containing replacement parts.



**IMPORTANT:**

If you have the optional stand for the CTS, remove the saw from the stand and perform this maintenance on a suitable workbench.

Certain maintenance operations may be best performed with your CTS tipped on its edge or perhaps even flipped upside down to rest on its top. As a result, many photos in this service manual do not depict the CTS in its normal, upright orientation.

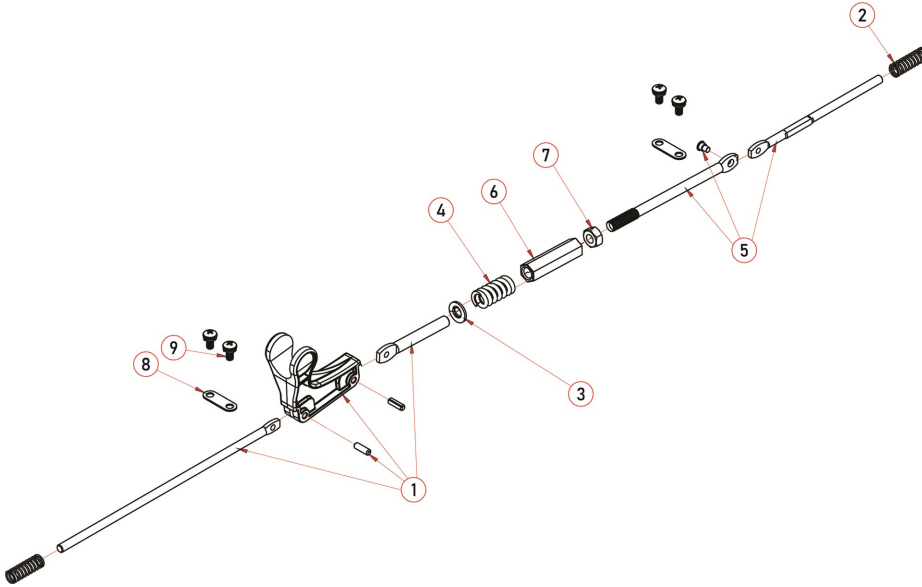
### Description

The **Rail Lock Rocker** is part of the mechanism that facilitates locking and unlocking the position of the fence rails on your CTS.

Below are step-by-step instructions for the disassembly required to remove and then replace the **Rail Lock Rocker**.

## Rail Lock Rocker (CTS-012)

### Exploded View



### Service Kit Parts List (CTS-012)

ITEM	DESCRIPTION	QTY
1	Rail Lock Rocker Assembly	1
2	Spring - Rail Lock, Pivot Return	2
3	Flat Washer - M8, 16mm x 1.5mm	1
4	Spring - 30mm, Rail Lock, Rocker	1
5	Rail Lock Link Assembly	1
6	Bushing - M8 x 1.25, 50mm, Partially Threaded, Rail Lock, Nut	1
7	Nut - M8 x 1.25, 13mm, Hex	1
8	Strap - Rail Lock	2
9	Bolt - M5x0.8, 10mm, Loctite, Lock Washer, Button Head, Phillips	4

### Tools Required

#2 Phillips Head Screwdriver

13mm Wrench (Qty 2)



### Prerequisites

None.

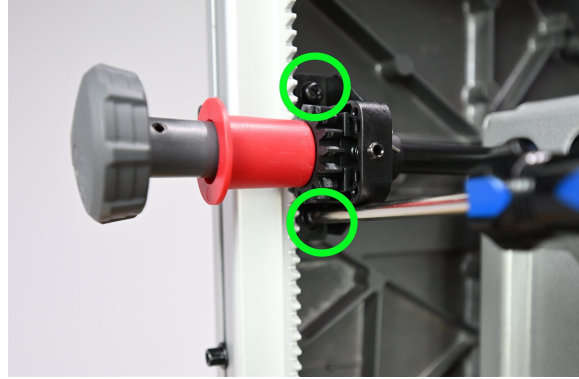


## Disassembly Steps



**IMPORTANT:** To ensure thorough understanding, please read the instructions all the way through before starting this procedure.

1. Using a #2 Phillips head screwdriver, remove both bolts from the front shaft alignment guide for the [Rail Lock Pinion](#).



2. Repeat step 1 at the other end of the pinion assembly (rear of the saw).

3. Loosen the *Nut - M8 x 1.25, 13mm, Hex [7]* indicated in the photo using a 13mm wrench.

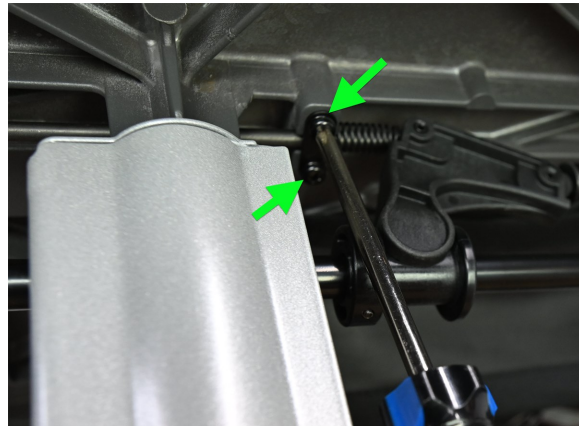
**NOTE:** A second 13mm wrench is needed for this operation. Position it on the *Bushing - M8 x 1.25, 50mm, Partially Threaded, Rail Lock, Nut [6]* to the left of the nut indicated in the photo.



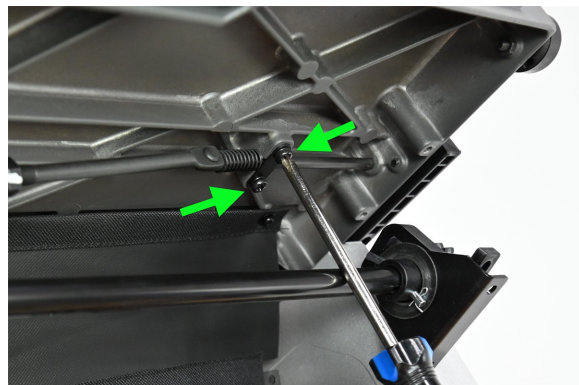


## Rail Lock Rocker (CTS-012)

4. Remove both *Bolts - M5x0.8, 10mm, Loctite, Lock Washer, Button Head, Phillips [9]* from the *Strap - Rail Lock [8]* using a #2 Phillips Head Screwdriver.



5. Repeat step 4 to remove the second *Retaining Strap - Rail Lock [13]* at the rear.



6. Slide the components out from both front and rear rail lock assemblies. Once removed, set it aside if it is to be re-installed later. Discard it if a replacement has been provided in the service kit you received from SawStop.



## Assembly Steps

1. Perform the **Disassembly Steps** described immediately above in reverse order. If a service kit containing new parts to replace those removed above was provided, use only the new parts during re-assembly.
2. In reverse order, re-visit each of the chapter(s) listed in the **Prerequisites** section in this chapter and perform the **Disassembly Steps** in reverse order for each.

## Inspection Steps

1. Confirm [Rail Lock Handle](#) operation to verify positive lock and unlock functionality. It should not slide freely but offer some resistance when the knob is pushed in (lock) or pulled out (unlock).



Adjust the rocker tension adjustment nut and bushing shown until the lock and unlock force is restored to its former behavior prior to performing this maintenance.



## Switch Box Assembly (CTS-038)

Use the instructions in this chapter to install the Switch Box service kit you received.



**WARNING:**

To ensure safety during maintenance, disconnect all electrical power to the saw and remove the saw blade.



**NOTE:**

For an optimal experience using this service manual, begin maintenance on your saw by starting with the chapter most directly associated with the CTS service kit you received containing replacement parts.



**IMPORTANT:**

If you have the optional stand for the CTS, remove the saw from the stand and perform this maintenance on a suitable workbench.

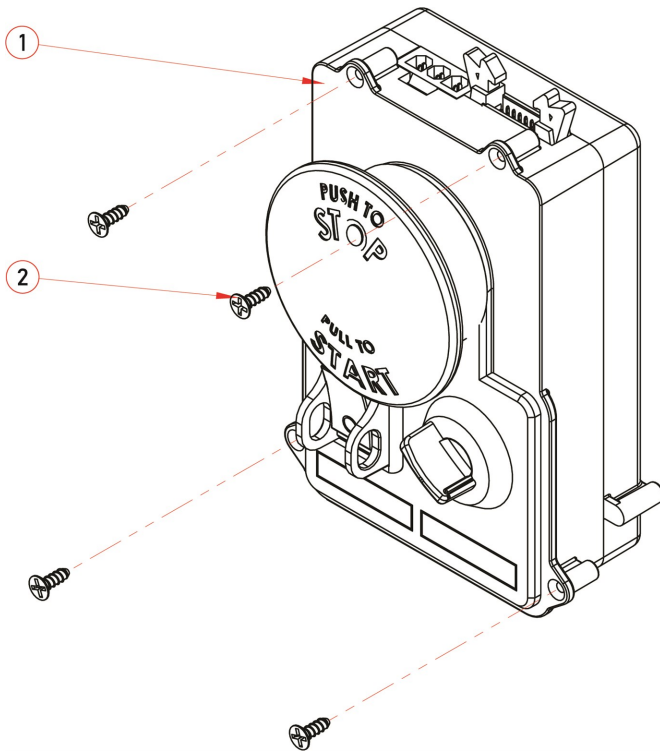
Certain maintenance operations may be best performed with your CTS tipped on its edge or perhaps even flipped upside down to rest on its top. As a result, many photos in this service manual do not depict the CTS in its normal, upright orientation.

## Description

The **Switch Box** contains the main power switch and other electronic components that are critical to the operation of your CTS. Below are step-by-step instructions for the disassembly required to remove and then replace the Switch Box.

## Switch Box Assembly (CTS-038)

### Exploded View



### Service Kit Parts List (CTS-038)

ITEM	DESCRIPTION	QTY
1	Switch Box Assembly	1
2	Screw - M4 x 1.8mm, 12mm, Flat Head, Phillips	4

### Tools Required

Torx T20 Driver

#2 Phillips Head Screwdriver



### Prerequisites

Disassembly steps for maintenance associated with the service kit you received requires the following prerequisites. For now, perform ONLY the disassembly steps in the following chapters in the order listed, then return to this chapter for the remaining instructions.

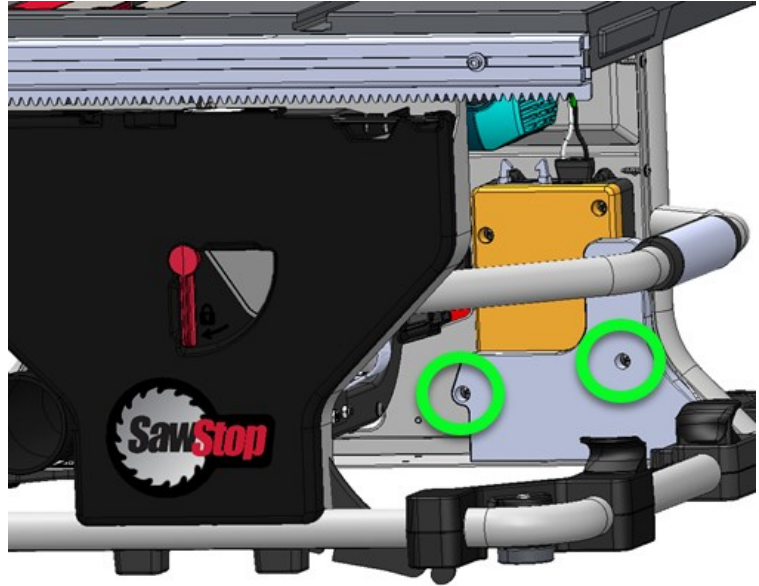
1. [Motor Cover \(CTS-015\)](#)

## Disassembly Steps

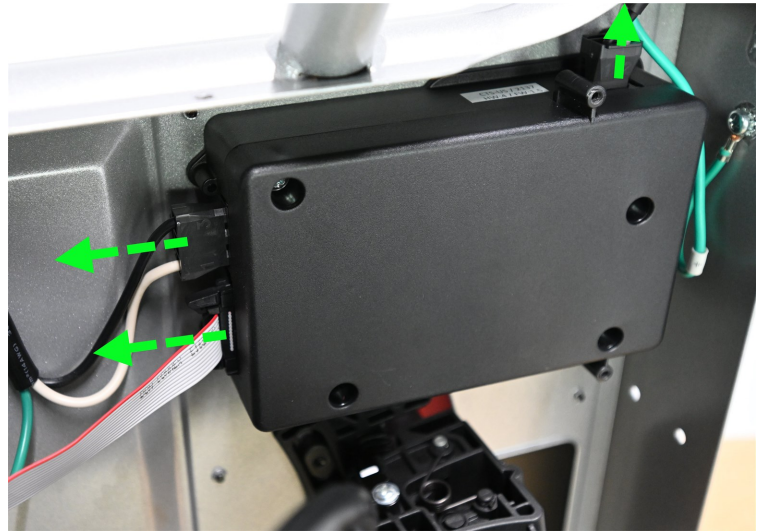


**IMPORTANT:** To ensure thorough understanding, please read the instructions all the way through before starting this procedure.

1. Remove the retaining panel behind the *Switch Box Assembly [1]* by removing the screws indicated in the photo. A Phillips Head Screwdriver is required.



2. Disconnect the three cables from the *Switch Box Assembly [1]*.



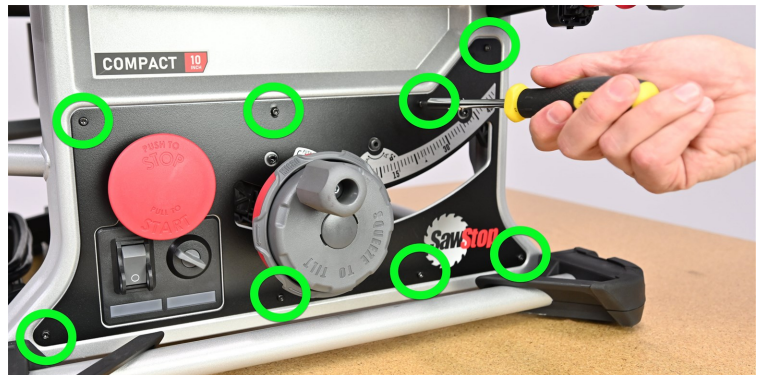


## Switch Box Assembly (CTS-038)

- Using a #2 Phillips screwdriver, remove the bevel indicator.



- Using a T20 Torx driver, remove the eight bolts that secure the front panel.

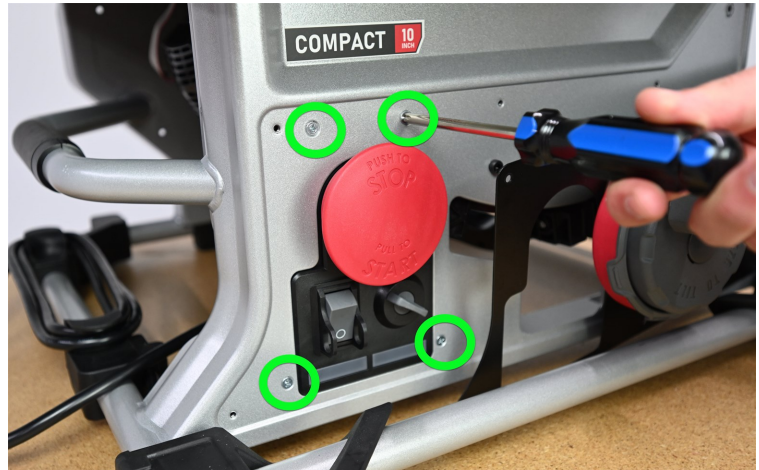


- Once free, slide the front panel upward to clear the *Switch Box Assembly [1]*. It does not need to be completely removed but simply shifted to the right in order to expose the screw described in the next step.



## Switch Box Assembly (CTS-038)

6. Remove the four *Screws - M4 x 1.8mm, 12mm, Flat Head, Phillips [2]* that secure the *Switch Box Assembly [1]* using a #2 Phillips head screwdriver.



7. The *Switch Box Assembly [1]* is now free. Slip it downward while tipping the bottom end away from the metal panel to which it was mounted to remove it from the saw.

Once removed, set it aside if it is to be re-installed later. Discard it if a replacement has been provided in the service kit you received from SawStop.



## Assembly Steps

1. Perform the **Disassembly Steps** described immediately above in reverse order. If a service kit containing new parts to replace those removed above was provided, use only the new parts during re-assembly.
2. In reverse order, re-visit each of the chapter(s) listed in the **Prerequisites** section in this chapter and perform the **Disassembly Steps** in reverse order for each.

## Inspection Steps

1. Restore power to your CTS and confirm expected operation of each of the controls on the *Switch Box Assembly [1]*.





## Alignment Block (CTS-032)

Use the instructions in this chapter to install the **Alignment Block** service kit you received.



**WARNING:**

To ensure safety during maintenance, disconnect all electrical power to the saw and remove the saw blade.



**NOTE:**

For an optimal experience using this service manual, begin maintenance on your saw by starting with the chapter most directly associated with the CTS service kit you received containing replacement parts.



**IMPORTANT:**

If you have the optional stand for the CTS, remove the saw from the stand and perform this maintenance on a suitable workbench.

Certain maintenance operations may be best performed with your CTS tipped on its edge or perhaps even flipped upside down to rest on its top. As a result, many photos in this service manual do not depict the CTS in its normal, upright orientation.

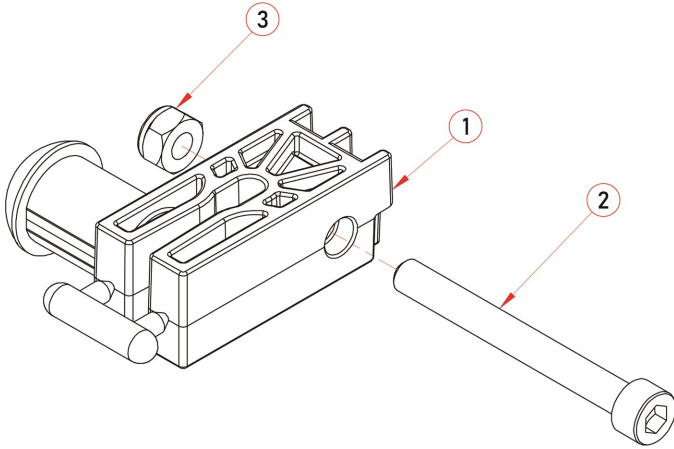
## Description

The **Alignment Block** is positioned between the motor of your CTS and a guide plate. It's function is to help maintain proper alignment of the motor assembly (and thus the saw blade) at any height adjustment.

Below are step-by-step instructions for the disassembly required to remove and then replace the **Alignment Block**.

## Alignment Block (CTS-032)

### Exploded View



### Service Kit Parts List (CTS-032)

ITEM	DESCRIPTION	QTY
1	Alignment Block Assy, Friction Plug	1
2	Bolt - M6 x 1.0, 55mm, Socket Head Cap	1
3	Lock Nut - M6 x 1.0mm	1

### Tools Required

5mm Allen Wrench



10mm Socket Wrench



Flat Blade Screwdriver



Square



## Prerequisites

Disassembly steps for maintenance associated with the service kit you received requires the following prerequisites. For now, perform ONLY the disassembly steps in the following chapters in the order listed, then return to this chapter for the remaining instructions.

1. [Motor Cover \(CTS-015\)](#)
2. Remove the saw blade - (Refer to your [CTS Owner's Manual](#))



**NOTE:**

If you have been directed to this chapter from another part of this manual, the prerequisites section of the chapter you began with might list one or more of the same prerequisites seen above. If you've already completed a listed disassembly, move on to the next instruction.

## Disassembly Steps



**IMPORTANT:** To ensure thorough understanding, please read the instructions all the way through before starting this procedure.

1. Rotate the elevation adjustment at the front of your CTS clockwise to raise the blade adjustment to it's highest position.



2. Insert a screwdriver as shown for use as a lever:

Place the tip of the screwdriver on the nut at left (indicated with the green arrow). Next, push the handle of the screwdriver upward with the shaft of the screwdriver just under the black, hook-shaped hardware (indicated by a red arrow).



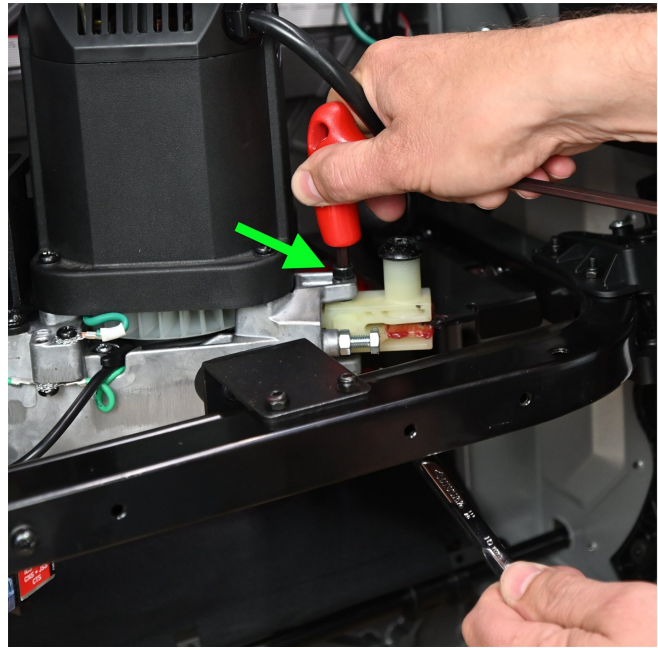
3. With an upward prying motion, hold the handle of the screwdriver against the underside of the saw table, as you rotate the elevation adjustment at the front of your CTS to lower the blade adjustment. This will assist with prying the black hook from the silver pin it straddles.

**CAUTION:** Be prepared for the motor to fall freely once the black hook has cleared the silver pin.

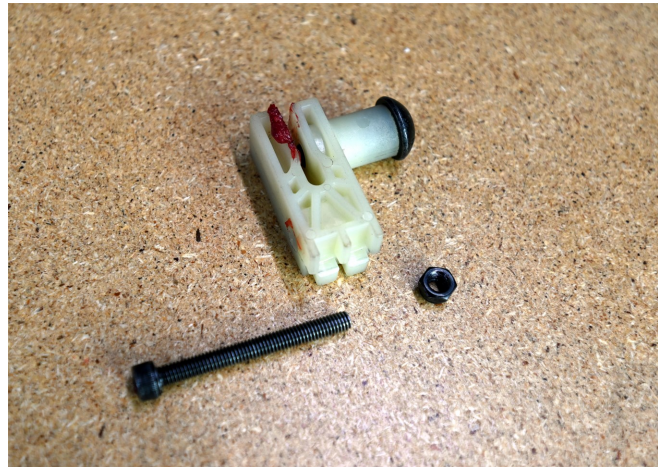


## Alignment Block (CTS-032)

4. Loosen the *Bolt - M6 x 1.0, 55mm, Socket Head Cap [3]* using a 5mm Allen wrench at the cap and a 10mm socket wrench at the *Lock Nut - M6 x 1.0mm [2]*.



5. The *Alignment Block [1]* is now free and can be removed. Once removed, set it aside if it is to be re-installed later. Discard it if a replacement has been provided in the service kit you received from SawStop.



## Assembly Steps

1. Perform the **Disassembly Steps** described immediately above in reverse order. If a service kit containing new parts to replace those removed above was provided, use only the new parts during re-assembly.
2. In reverse order, re-visit each of the chapter(s) listed in the **Prerequisites** section in this chapter and perform the **Disassembly Steps** in reverse order for each.



## Inspection Steps

1. Confirm that the gap between the retraction adjustment screw and the gearbox is adequate. A piece of standard copy paper should just slip into the gap.
2. Align the blade to the miter slot using the process found in the [CTS Owner's Manual](#). A companion [video](#) is also available detailing the process for aligning the blade and the fence to the miter slot.

Watch: [SawStop Service Tip: Aligning the Blade and Rip Fence to the Miter Slots on the Compact Table Saw](#)

3. Use any angle measuring device or standard to confirm bevel accuracy at 0° and 45° settings. If needed, adjust the red, metal arrow at the protractor on the front of your CTS using a #2 Phillips head screwdriver.



## U-Joint (CTS-037)

Use the instructions in this chapter to install the **U-Joint** service kit you received.



**WARNING:**

To ensure safety during maintenance, disconnect all electrical power to the saw and remove the saw blade.



**NOTE:**

For an optimal experience using this service manual, begin maintenance on your saw by starting with the chapter most directly associated with the CTS service kit you received containing replacement parts.



**IMPORTANT:**

If you have the optional stand for the CTS, remove the saw from the stand and perform this maintenance on a suitable workbench.

Certain maintenance operations may be best performed with your CTS tipped on its edge or perhaps even flipped upside down to rest on its top. As a result, many photos in this service manual do not depict the CTS in its normal, upright orientation.

## Description

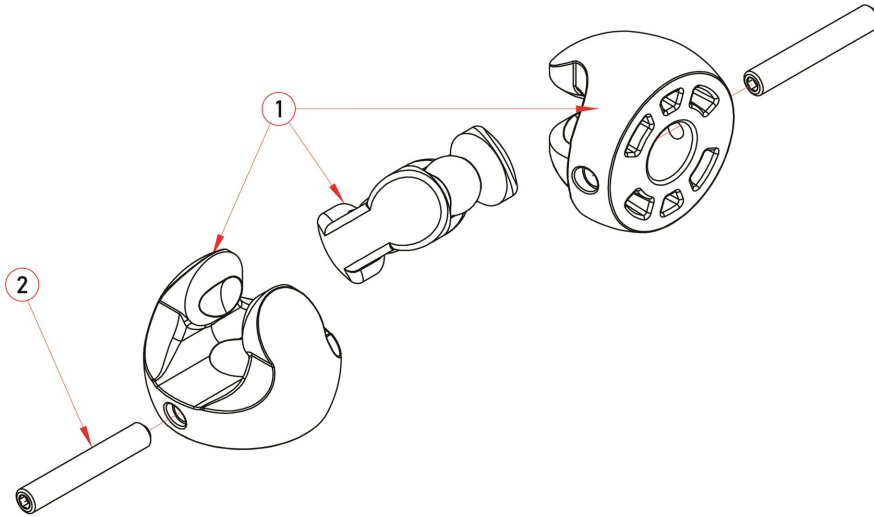
The U-Joint is part of the mechanism associated with blade height adjustment on your SawStop Compact Table Saw. It provides a 90 degree junction between the Elevation Control Shaft and the worm drive shaft.

Below are step-by-step instructions for the disassembly required to remove and then replace the **U-Joint** in your CTS.



## U-Joint (CTS-037)

### Exploded View



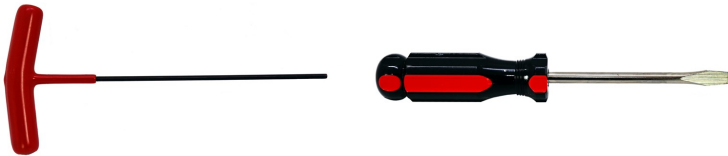
### Service Kit Parts List (CTS-037)

ITEM	DESCRIPTION	QTY
1	U-Joint Assembly - Elevation Control	1
2	Set Screw - M4 x 0.7, 25mm, Socket Head	2

### Tools Required

2mm Allen Wrench

Flat Head Screwdriver



### Prerequisites

Disassembly steps for maintenance associated with the service kit you received requires the following prerequisites. For now, perform ONLY the disassembly steps in the following chapters in the order listed, then return to this chapter for the remaining instructions.

1. [Dust Shroud \(CTS-013\)](#)
2. Remove the brake cartridge - (Refer to your [CTS Owner's Manual](#))

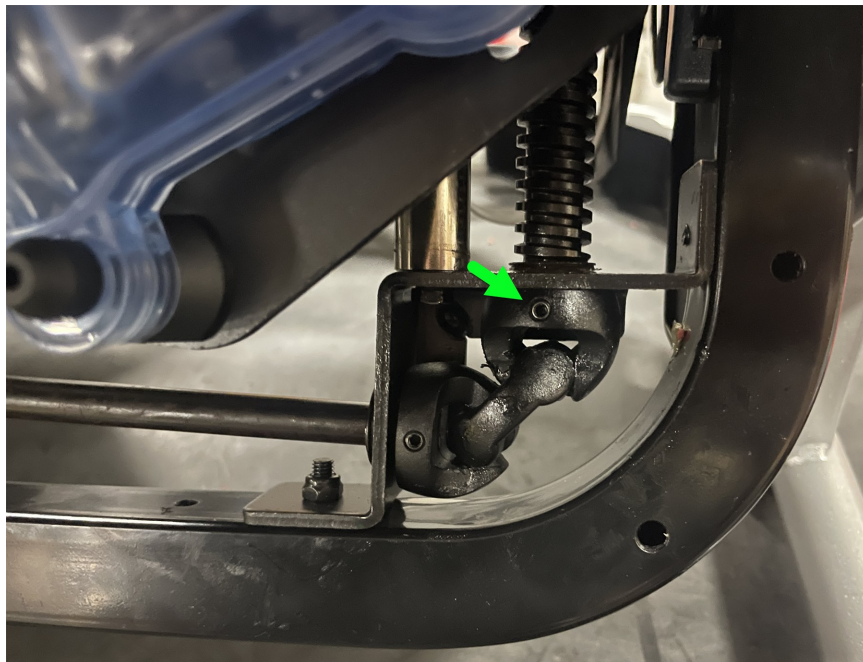
## Disassembly Steps



**IMPORTANT:** To ensure thorough understanding, please read the instructions all the way through before starting this procedure.

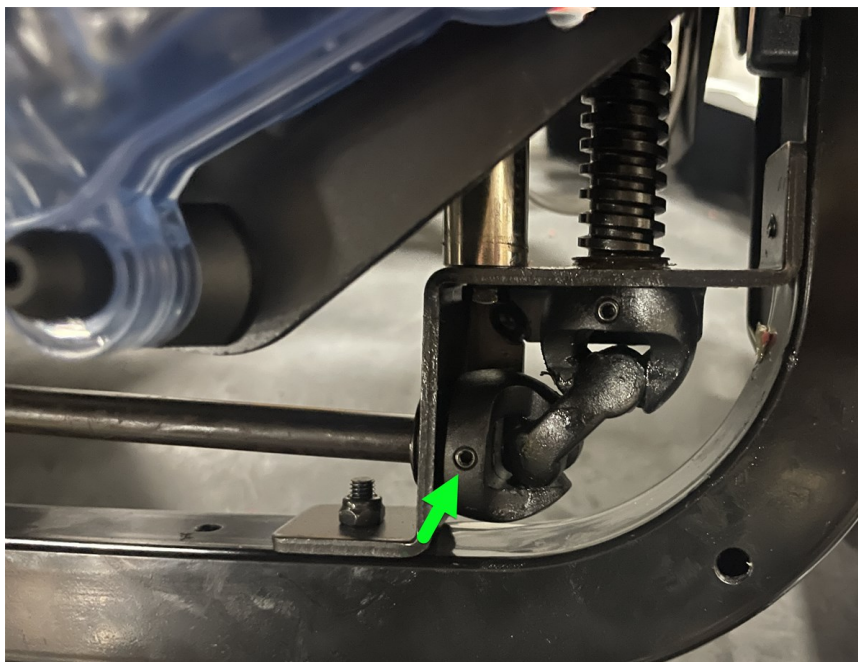
1. Locate the U-joint just beneath the brake cartridge.
2. There are two set screws that link the U-joint the rest of the elevation apparatus. Both set screws must be removed. First, remove the set screw that links the U-joint to the worm drive:

As you rotate the elevation adjustment at the front your CTS, the head of of the *Set Screw, M4 x 0.7mm, 25mm, Allen Socket Head [2]* will become visible. Note that the head of the set screw may be obscured by grease. Remove the set screw using a 2mm Allen wrench.



## U-Joint (CTS-037)

3. Next remove the second set screw linking the U-Joint to the [Elevation Control Shaft](#):



4. Disengage the worm drive and the Elevation Control Shaft from the U-joint. This can typically be done by hand but a flat head screwdriver may be required to separate these components.
5. Remove the U-Joint. Handle carefully as it will be greasy.



Once removed, set it aside if it is to be re-installed later. Discard it if a replacement has been provided in the service kit you received from SawStop.

## Assembly Steps

1. Perform the **Disassembly Steps** described immediately above in reverse order but this time, you'll use only the new parts contained in the service kit you received from SawStop (if supplied). Here are a few tips regarding reassembly:
  - a. Install the U-Joint to the upper, worm drive shaft first, then connect the U-Joint with the horizontal [Elevation Control Shaft](#) second.
  - b. Remember to apply grease to the U-Joint (not included). A video tutorial is available for this step.  
Watch [SawStop Service Tip: General Maintenance and Lubrication for the Compact Table Saw](#)
2. In reverse order, re-visit each of the chapter(s) listed in the **Prerequisites** section in this chapter and perform the **Disassembly Steps** reverse order for each.

## Inspection Steps

1. Confirm that the set screws are flush and do not protrude from either side of the U-Joint. There are two set screws to inspect.
2. Rotate the elevation adjustment knob and confirm that the U-Joint functions smoothly. If it does not run smoothly, the cause may be due to the set screw(s) protruding from one side or the other of the U-joint. Re-inspect the set screws and confirm they are flush.

## Retraction Bracket (CTS-029)

Use the instructions in this chapter to install the **Retraction Bracket** service kit you received.



**WARNING:**

To ensure safety during maintenance, disconnect all electrical power to the saw and remove the saw blade.



**NOTE:**

For an optimal experience using this service manual, begin maintenance on your saw by starting with the chapter most directly associated with the CTS service kit you received containing replacement parts.



**IMPORTANT:**

If you have the optional stand for the CTS, remove the saw from the stand and perform this maintenance on a suitable workbench.

Certain maintenance operations may be best performed with your CTS tipped on its edge or perhaps even flipped upside down to rest on its top. As a result, many photos in this service manual do not depict the CTS in its normal, upright orientation.

### Description

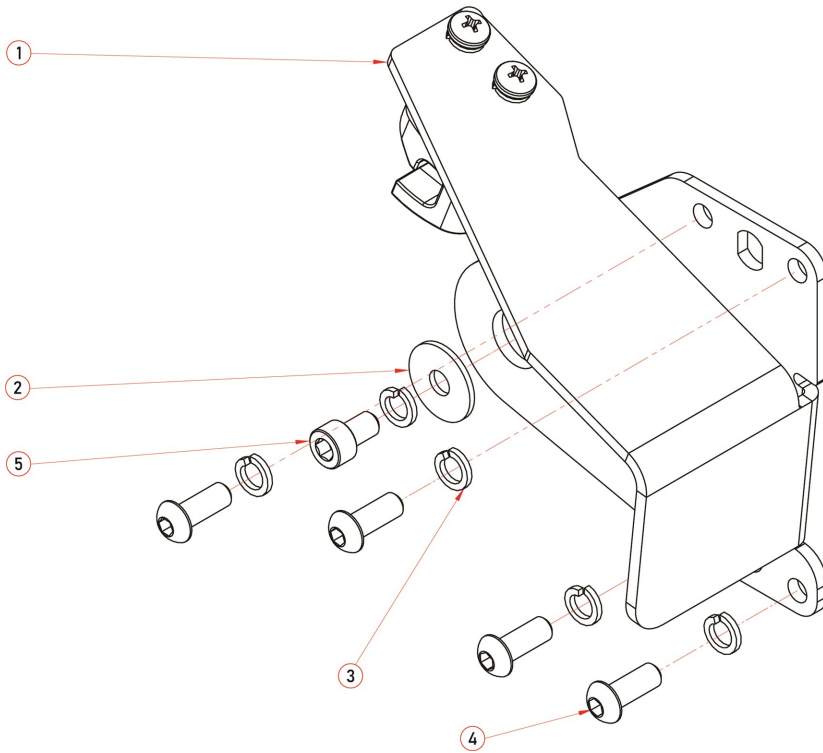
The **Retraction Bracket** is part of the hinge-like apparatus on which the motor/gearbox assembly pivots when the blade height is adjusted.

Below are step-by-step instructions for the disassembly required to remove and then replace the **Retraction Bracket**.



## Retraction Bracket (CTS-029)

### Exploded View



### Service Kit Parts List (CTS-029)

ITEM	DESCRIPTION	QTY
1	Retraction Bracket	1
2	Flat Washer - M6, 20mm x 1.5mm	1
3	Lock Washer - M6	5
4	Bolt - M6 x 1.0mm, 16mm, Button Head, Socket	4
5	Bolt - M6 x 1.0mm, 10mm, Cap Head, Socket	1



## Tools Required

4mm Allen Wrench



5mm Allen Wrench



#2 Phillips Head Screwdriver



Flat Head Screwdriver



## Prerequisites

Disassembly steps for maintenance associated with the service kit you received requires the following prerequisites. For now, perform ONLY the disassembly steps in the following chapters in the order listed, then return to this chapter for the remaining instructions.

1. [Motor Cover \(CTS-015\)](#)
2. Remove the Blade Guard
3. Remove the saw blade - (Refer to your [CTS Owner's Manual](#))



### NOTE:

If you have been directed to this chapter from another part of this manual, the prerequisites section of the chapter you began with might list one or more of the same prerequisites seen above. If you've already completed a listed disassembly, move on to the next instruction.

## Disassembly Steps



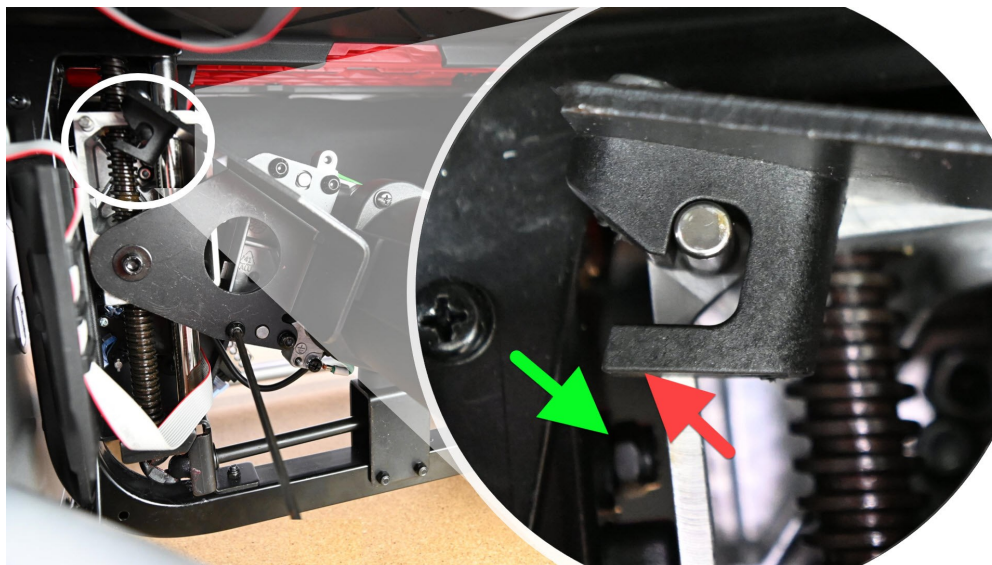
**IMPORTANT:** To ensure thorough understanding, please read the instructions all the way through before starting this procedure.

1. Rotate the elevation adjustment at the front of your CTS clockwise to raise the blade adjustment to its highest position.



2. Insert a screwdriver as shown for use as a lever:

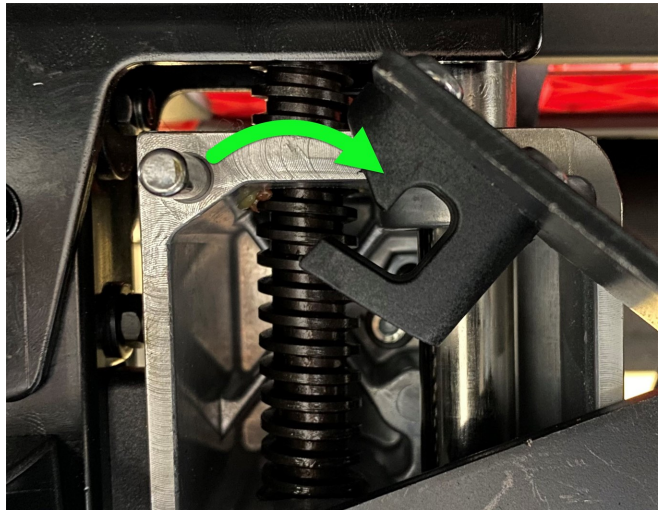
Place the tip of the screwdriver on the nut at left (indicated with the green arrow). Next, push the handle of the screwdriver upward with the shaft of the screwdriver just under the black, hook-shaped hardware (indicated by a red arrow).



## Retraction Bracket (CTS-029)

3. With an upward prying motion, hold the handle of the screwdriver against the underside of the saw table, as you rotate the elevation adjustment at the front of your CTS to lower the blade adjustment. This will assist with prying the black hook from the silver pin it straddles.

**CAUTION:** Be prepared for the motor to fall freely once the black hook has cleared the silver pin.



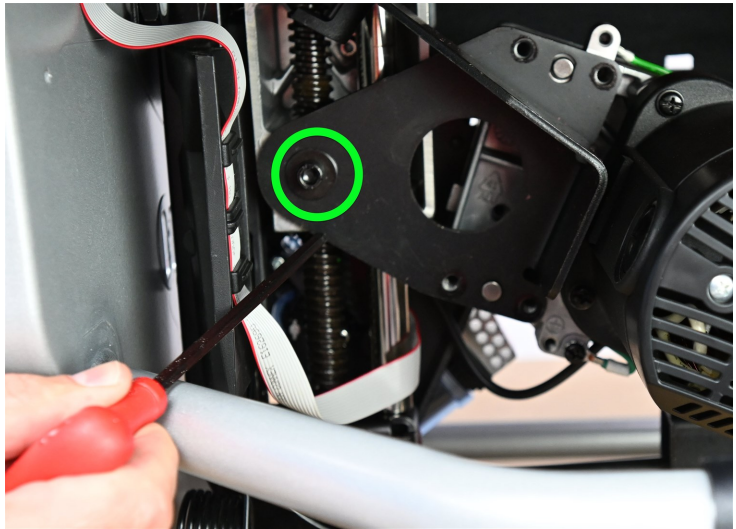
4. Remove the four Bolts - M6 x 1.0mm, 16mm, Button Head, Socket [4] indicated in the photo using a 4mm Allen wrench.



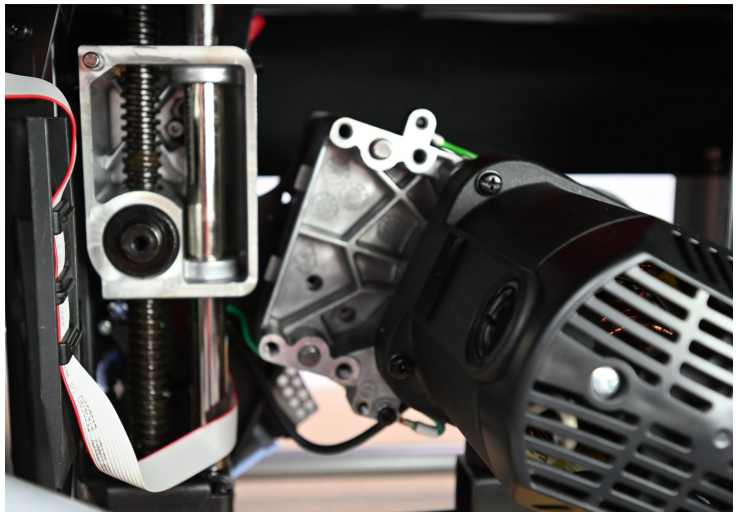


## Retraction Bracket (CTS-029)

5. Remove the *Bolt - M6 x 1.0mm, 10mm, Cap Head, Socket [5]* indicated using a 5mm Allen Wrench.

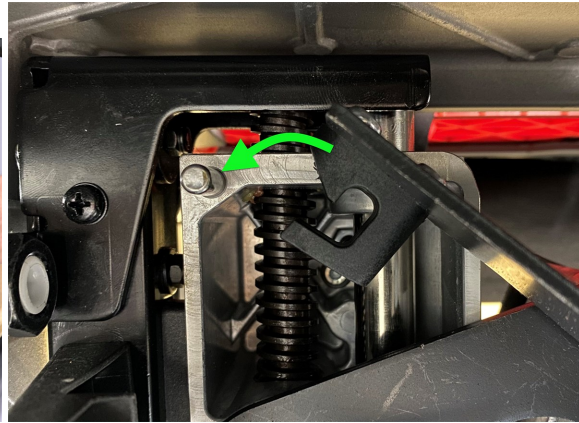


6. The *Retraction Bracket [1]* is now free and can be removed from your CTS.  
Once removed, set it aside if it is to be re-installed later. Discard it if a replacement has been provided in the service kit you received from SawStop.



## Assembly Steps

1. Perform the **Disassembly Steps** 4-6 above in reverse order.
2. Rotate the elevation adjustment at the front of your CTS to drop the blade adjustment to it's lowest position. Toward the bottom of the range of travel, you'll feel some resistance but continue to lower the assembly until the retraction block re-engages with the pin.



3. In reverse order, re-visit each of the chapter(s) listed in the **Prerequisites** section in this chapter and perform the **Disassembly Steps** reverse order for each.

## Inspection Steps

1. Confirm that there is no gap between the retraction adjustment screw and the gearbox. If a piece of standard copy paper can be passed between the two parts, the retraction adjustment screw should be adjusted. The adjustment screw should be just touching the gearbox but not applying pressure or adding significant friction.

## Brake Cartridge Bracket (CTS-027)

Use the instructions in this chapter to install the **Brake Cartridge Bracket** service kit you received.



**WARNING:**

To ensure safety during maintenance, disconnect all electrical power to the saw and remove the saw blade.



**NOTE:**

For an optimal experience using this service manual, begin maintenance on your saw by starting with the chapter most directly associated with the CTS service kit you received containing replacement parts.



**IMPORTANT:**

If you have the optional stand for the CTS, remove the saw from the stand and perform this maintenance on a suitable workbench.

Certain maintenance operations may be best performed with your CTS tipped on its edge or perhaps even flipped upside down to rest on its top. As a result, many photos in this service manual do not depict the CTS in its normal, upright orientation.

## Description

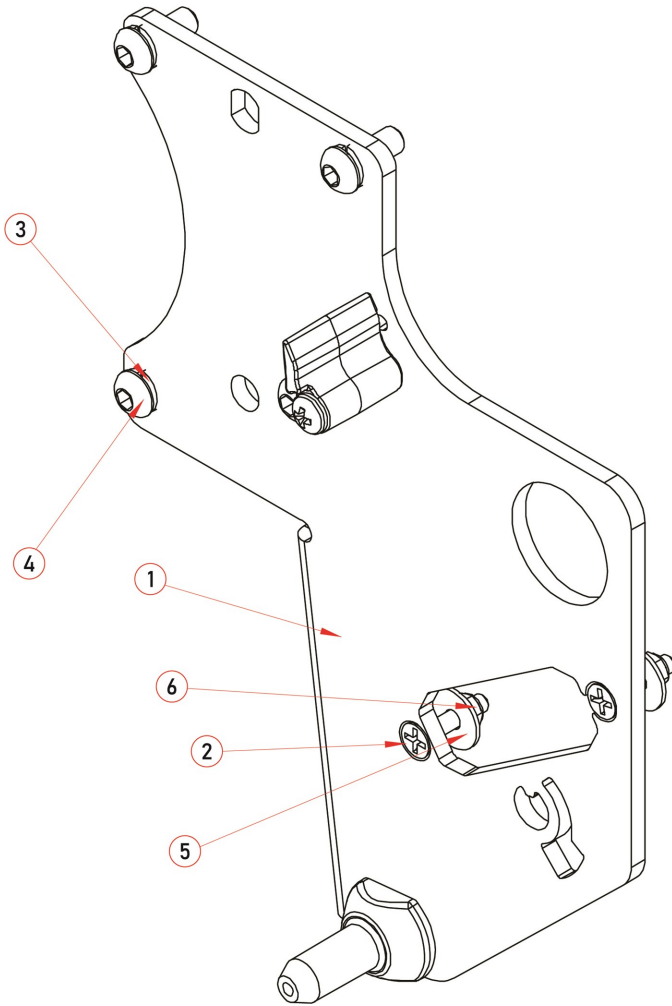
The **Brake Cartridge Bracket** is an integral element of the safety system of your CTS. It consists of a steel plate with substantial mounting points to both anchor it within the structure of the saw and to also hold the brake cartridge.

Below are step-by-step instructions for the disassembly required to remove and then replace the **Brake Cartridge Bracket**.



## Brake Cartridge Bracket (CTS-027)

### Exploded View



### Service Kit Parts List (CTS-027)

ITEM	DESCRIPTION	QTY
1	Brake Cartridge Bracket Assembly	1
2	Bolt - M4x0.7, 20mm, Flat Head, Phillips	2
3	Lock Washer - M6	4
4	Bolt - M6x1.5, 16mm, Button Head, Socket	4
5	Flat Washer - M4, Flat, 14mm OD x 1mm	2
6	Lock Nut -M4x0.7	2

## Tools Required

7mm Wrench



#2 Phillips Head Screwdriver



Flat Blade Screwdriver



6mm Allen Wrench



## Prerequisites

Disassembly steps for maintenance associated with the service kit you received requires the following prerequisites. For now, perform ONLY the disassembly steps in the following chapters in the order listed, then return to this chapter for the remaining instructions.

1. [Dust Shroud \(CTS-013\)](#)
2. [Motor Cover \(CTS-015\)](#)



**NOTE:**

If you have been directed to this chapter from another part of this manual, the prerequisites section of the chapter you began with might list one or more of the same prerequisites seen above. If you've already completed a listed disassembly, move on to the next instruction.

## Disassembly Steps



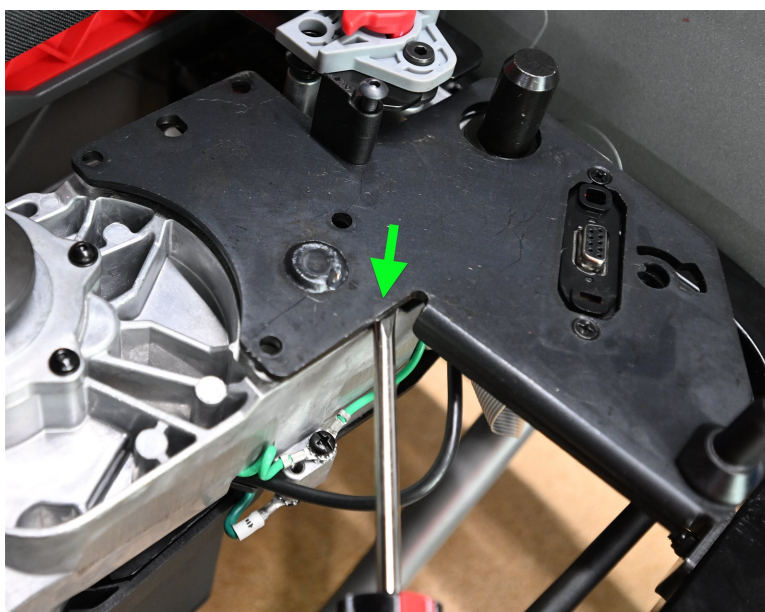
**IMPORTANT:** To ensure thorough understanding, please read the instructions all the way through before starting this procedure.

1. Remove the brake cartridge and set it aside. Refer to your [CTS Owner's Manual](#) for instructions.
2. Using a 6mm Allen Wrench, remove the four *Bolts - M6x1.5, 16mm, Button Head, Socket [4]* and *Lock Washers - M6 [3]* securing the *Brake Cartridge Bracket Assembly [1]* to the CTS.

## Brake Cartridge Bracket (CTS-027)

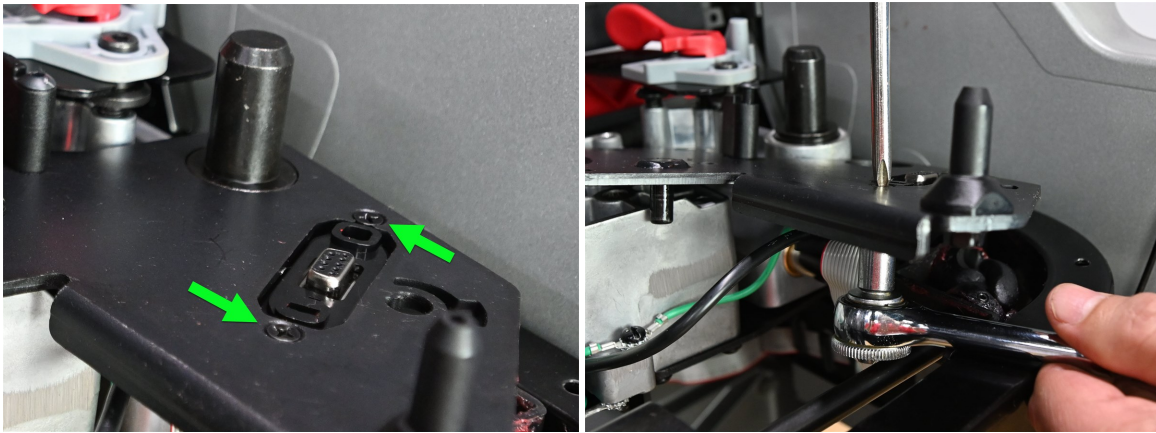


3. Lift the *Brake Cartridge Bracket Assembly [1]* away from the CTS. A small amount of prying force with a flat blade screwdriver or similar pry tool may be required to separate the plate from the saw.



4. From the *Brake Cartridge Bracket Assembly [1]*, remove two *Bolts -M4x0.7, 20mm, Flat Head, Phillip [2]* and two *Lock Nuts -M4x0.7 [6]* at the locations shown using a #2 Phillip head screwdriver and a 7mm wrench.

## Brake Cartridge Bracket (CTS-027)



Once the nut is free from the bolt, be prepared for the *Flat Washer - M4, Flat, 14mm OD x 1mm [5]* and spacer that is also part of this hardware stack to fall away as well.

5. The *Brake Cartridge Bracket Assembly [1]* is now free and can be removed.



Once removed, set it aside if it is to be re-installed later. Discard it if a replacement has been provided in the service kit you received from SawStop.

## Assembly Steps

1. Perform the **Disassembly Steps** described immediately above in reverse order. If a service kit containing new parts to replace those removed above was provided, use only the new parts during re-assembly.
2. In reverse order, re-visit each of the chapter(s) listed in the **Prerequisites** section in this chapter and perform the **Disassembly Steps** in reverse order for each.

## Inspection Steps

None.



## Motor/Gear Box Assembly (CTS-042, CTS-043)

Use the instructions in this chapter to install the **Motor/Gear Box** service kit you received.



**WARNING:**

To ensure safety during maintenance, disconnect all electrical power to the saw and remove the saw blade.



**NOTE:**

For an optimal experience using this service manual, begin maintenance on your saw by starting with the chapter most directly associated with the CTS service kit you received containing replacement parts.



**IMPORTANT:**

If you have the optional stand for the CTS, remove the saw from the stand and perform this maintenance on a suitable workbench.

Certain maintenance operations may be best performed with your CTS tipped on its edge or perhaps even flipped upside down to rest on its top. As a result, many photos in this service manual do not depict the CTS in its normal, upright orientation.

### Description

The motor and associated gearbox is of course the heart of the CTS. It's purpose is to spin the saw blade in order to provide cutting action. It is attached to a series of mechanisms that enable it to be raised, lowered and the bevel angle changed. Two variants of this motor/gearbox service kit are available:

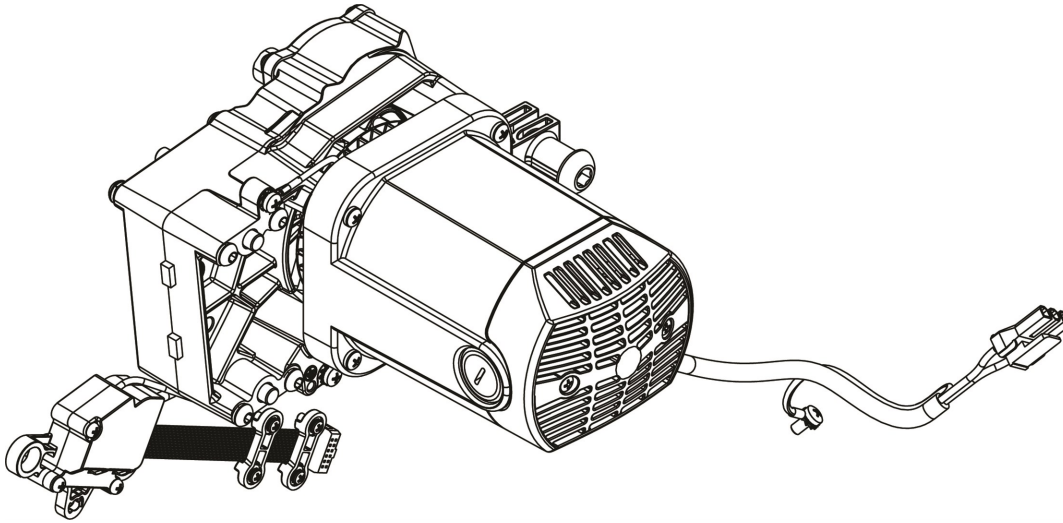
- CTS-042 - 120V, 60Hz Motor (US Version)
- CTS-043 - 230V, 50Hz Motor (Australia Version)

The installation hardware, disassembly and reassembly instructions are identical for both variants.

Below are step-by-step instructions for the disassembly required to remove and then replace the **Motor/Gear Box Assembly**.



## Exploded View



## Service Kit Parts List (CTS-042 and CTS-043)

ITEM	DESCRIPTION	QTY
1	Motor Assembly	1
2	Bolt - M5 x 0.8, 10mm, Pan Head, Phillips	5
3	Clamp - Cable, Retaining, 4mm, Plastic	1
4	Clamp - Ribbon Cable,	2
5	Bolt - M4 x 0.7, 10mm, Lock Washer, Button Head, Phillips	4

## Tools Required

7mm Wrench



Square



#2 Phillips Head Screwdriver



## Prerequisites

Disassembly steps for maintenance associated with the service kit you received requires the following prerequisites. For now, perform ONLY the disassembly steps in the following chapters in the order listed, then

## Motor/Gear Box Assembly (CTS-042, CTS-043)

return to this chapter for the remaining instructions.

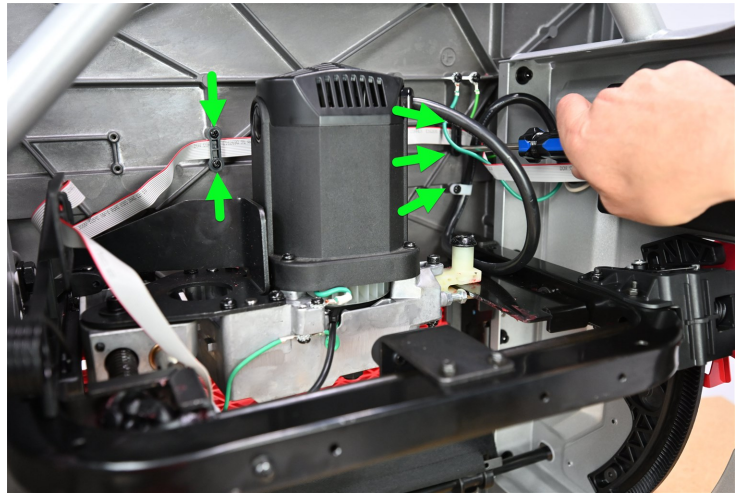
1. [Motor Cover \(CTS-015\)](#)
2. [Brake Cartridge Bracket \(CTS-027\)](#)

## Disassembly Steps

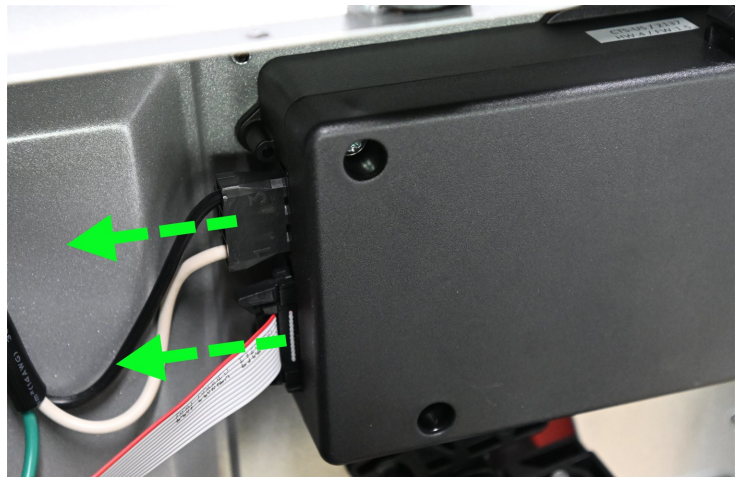


**IMPORTANT:** To ensure thorough understanding, please read the instructions all the way through before starting this procedure.

1. Using a #2 Philips Head Screwdriver remove all screws indicated in the picture to free the ribbon and power cables.

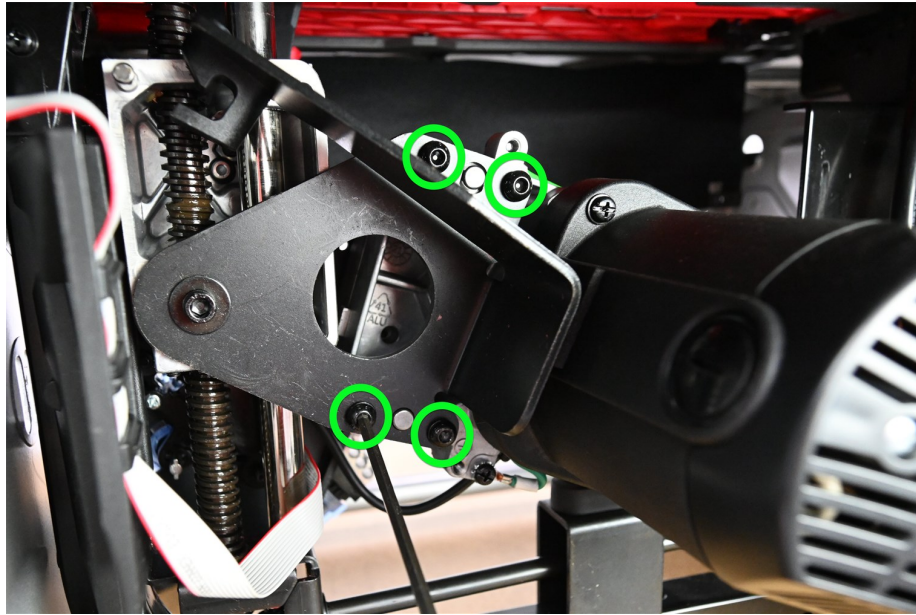


2. Unplug both ribbon and power cables from the switch box.

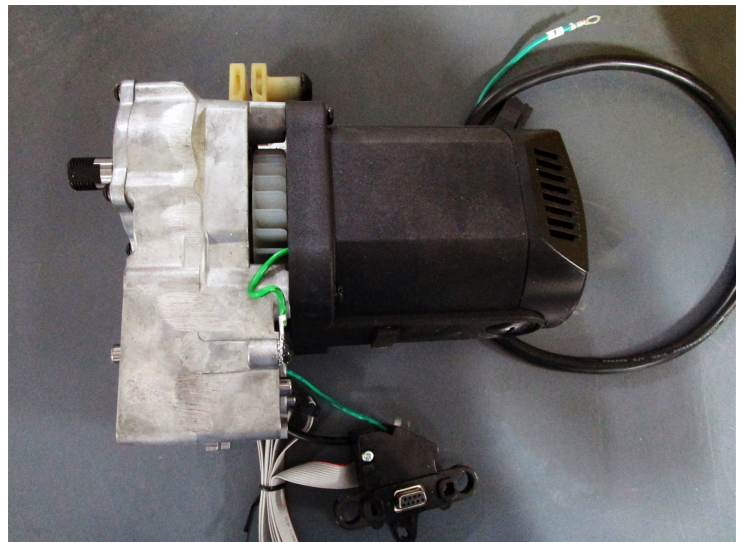


Motor/Gear Box Assembly (CTS-042, CTS-043)

3. Complete the disassembly steps from the [Retraction Bracket \(CTS-029\)](#) chapter.



4. The motor assembly is now free and can be removed from your CTS. Once removed, set it aside if it is to be re-installed later. Discard it if a replacement has been provided in the service kit you received from SawStop.



NOTE: Once removed, set it aside if it is to be reinstalled. If a replacement motor has been provided, be sure to remove the arbor nut and washers and transfer them to the replacement motor before discarding the original motor.

## Assembly Steps

1. Perform the **Disassembly Steps** described immediately above in reverse order. If a service kit containing new parts to replace those removed above was provided, use only the new parts during re-assembly.
2. In reverse order, re-visit each of the chapter(s) listed in the **Prerequisites** section in this chapter and perform the **Disassembly Steps** in reverse order for each.

## Inspection Steps

1. Use any angle measuring device and confirm the bevel angle indicator on the front of the saw is accurate. Measure the blade to table angle accuracy at both 0° and 45°. If needed, adjust the red bevel angle pointer using a #2 Phillips head screwdriver to ensure the pointer indicates true angle.



The motor/gearbox maintenance is now complete.

## Contact SawStop

Main	503.570.3200 or 1.866.729.7867	info@sawstop.com
Technical Support (Service)	503.582.9934	service@sawstop.com
Parts	503.486.6923	parts@sawstop.com
Sales	503.595.2665	sales@sawstop.com



Our technical support team is standing by  
**Monday-Friday, 7am-5pm Pacific Time**  
to help with whatever you need.

You can access this manual, exploded views and parts lists at:  
[SawStop.com/CTSsupport](http://SawStop.com/CTSsupport)

Visit the parts store at.

<https://www.sawstopstore.com>

If your saw is out of warranty shipping costs will be lower if you use the parts store.

SawStop, LLC

11555 SW Myslony Street, Tualatin, Oregon 97062 USA

