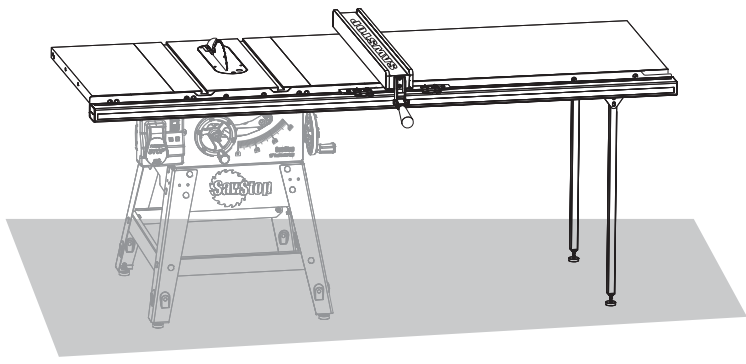




Installing Your T-Glide™ Fence System on Your Contractor Saw

(See other poster for Professional Cabinet Saw)



Confirm components: If any components are missing, call SawStop Service at 503-582-9934.

Rear Rail
Front Rail
Extension Table
T-Glide Fence
Front Tube
Leg Support Bracket (2)
Fence Handle
Support Leg (2)

T-Glide Table Hardware Pack
T-Glide Rails Hardware Pack

Required tools:
5 mm Hex Key
13 mm wrench
17 mm wrench (2)

Straight-edge

The following instructions cover both 36" & 52" fences, the 52" version is shown in the illustrations.

Indicates hand-tighten

1 Attach Front Rail

A Set the right end on floor, lift the left end, and then install the first bolt.

B Lift the right end, and then install the second bolt.

Miter Slots
Notches (2)

T-Glide Rails Hardware Pack

1 Attach Front Rail (cont.)

T-Glide Rails Hardware Pack

1 Attach Front Rail (cont.)

A Level the top edge of the rail with the lower edge of the bevel on the wings.

B

2 Attach Rear Rail

Tighten (with step B)

Rear Rail

Miter Slots
Notches (2)

T-Glide Rails Hardware Pack

2 Attach Rear Rail (cont.)

T-Glide Rails Hardware Pack

3 Level Wings

A Straight-edge

Front Rail

B Repeat for the rear zone.

Repeat step 3 for the right extension wing.

4 Attach Adjustment Bracket

Extension Table

T-Glide Table Hardware Pack

The adjustment bracket is for cast iron wings only. If your saw has stamped wings, skip to the next step.

5 Attach Leg Support Brackets

Rear Rail
Front Rail
Leg Support Bracket

The leg support brackets create a temporary shelf for the extension table to rest on during the next two steps.

T-Glide Table Hardware Pack

6 Attach Table

The table is not yet attached, take care to prevent the table from falling.

Use the adjustment screw to make the extension table roughly flush with the wing.

6 Attach Table (cont.)

36" 52"
Front Rail
Rear Rail
52" 36"

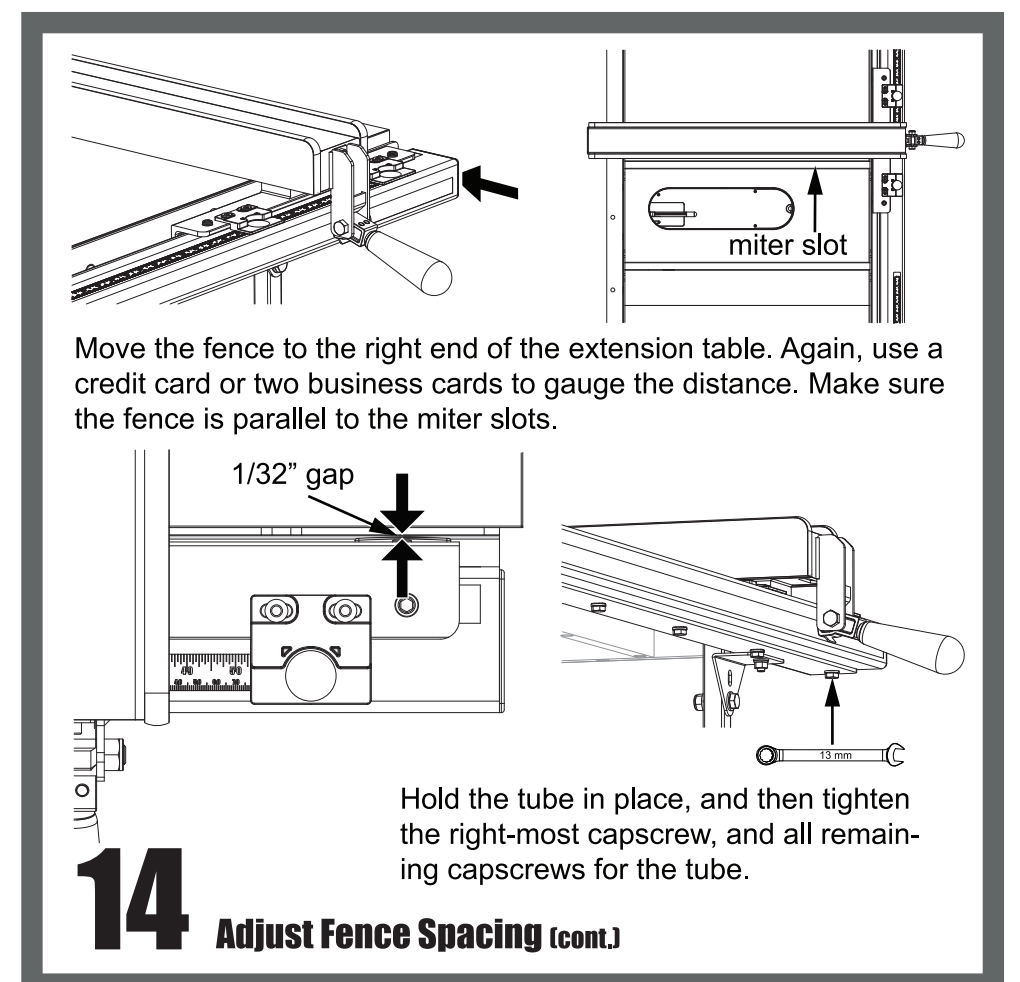
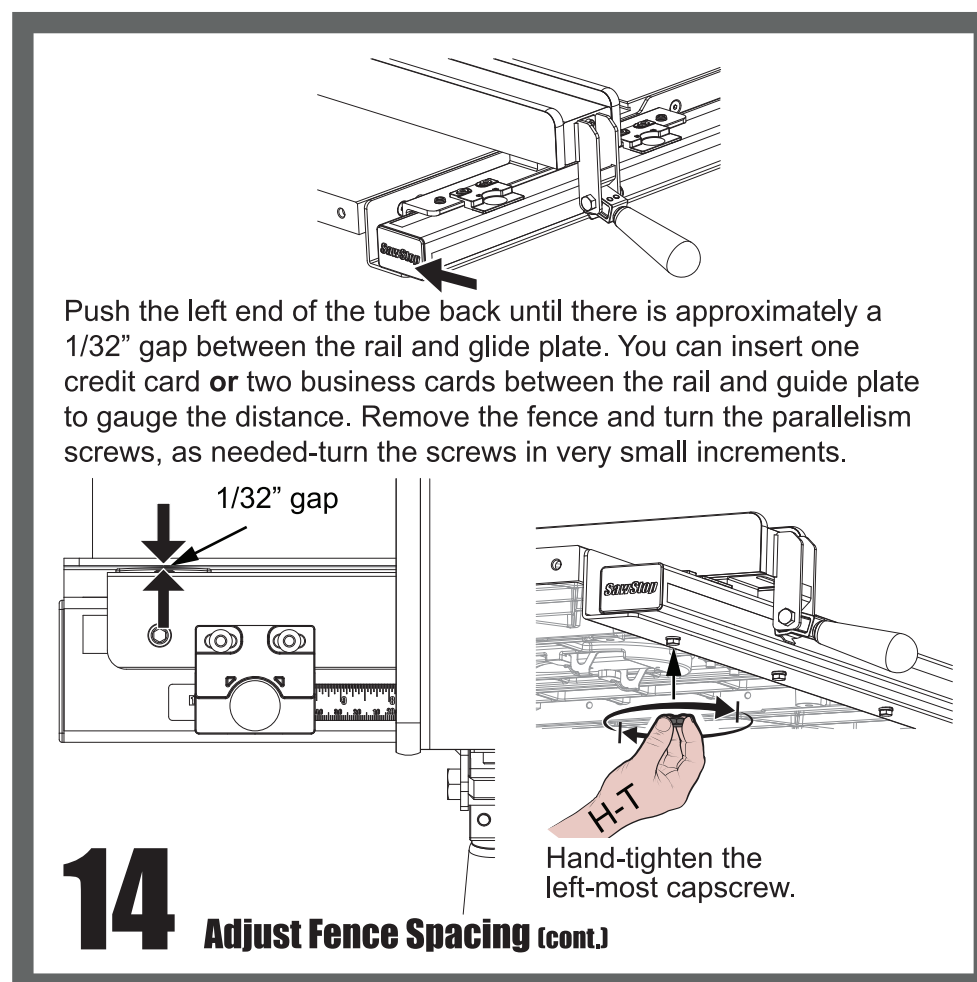
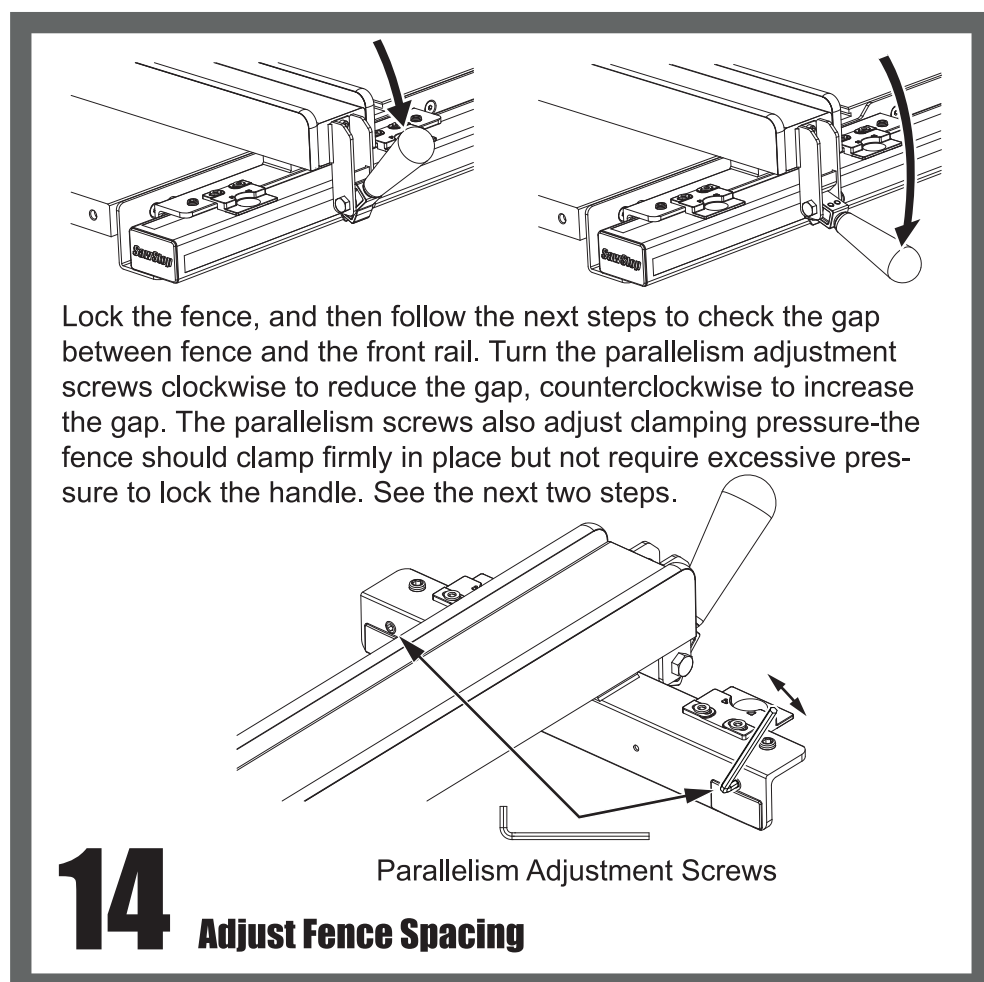
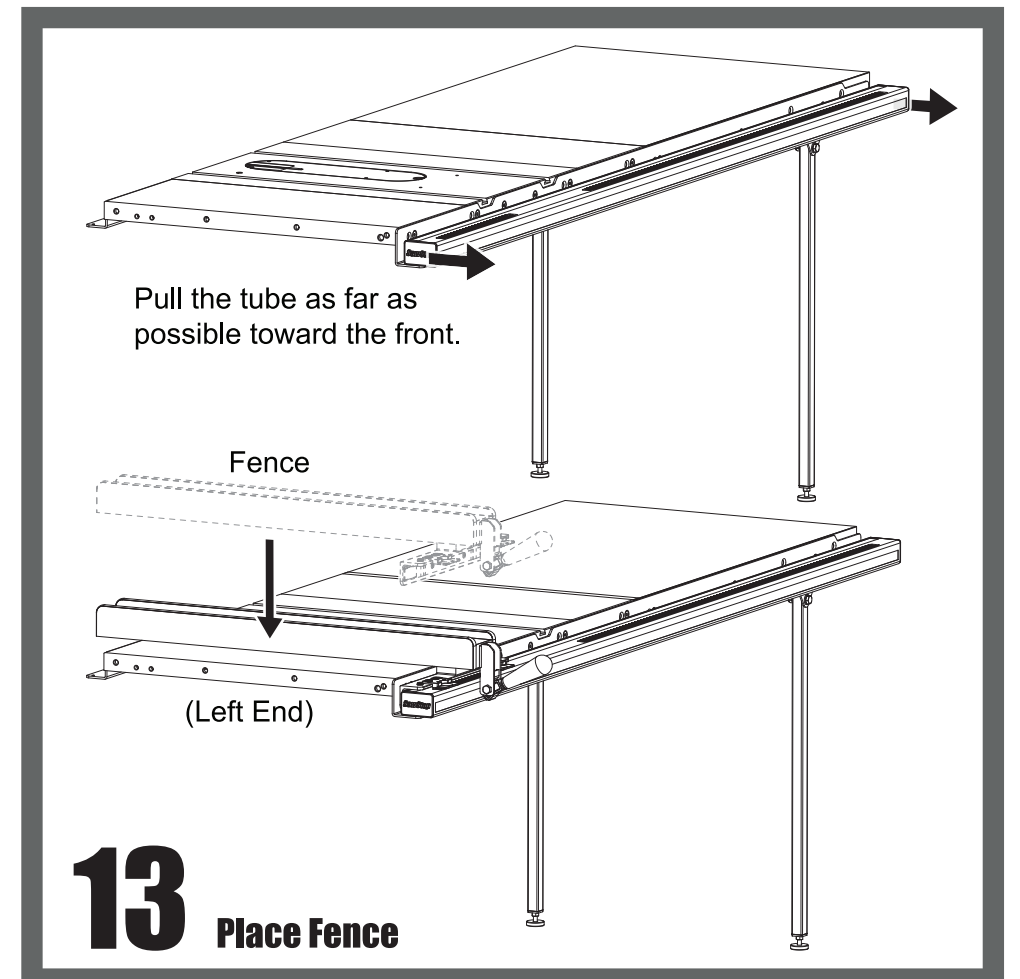
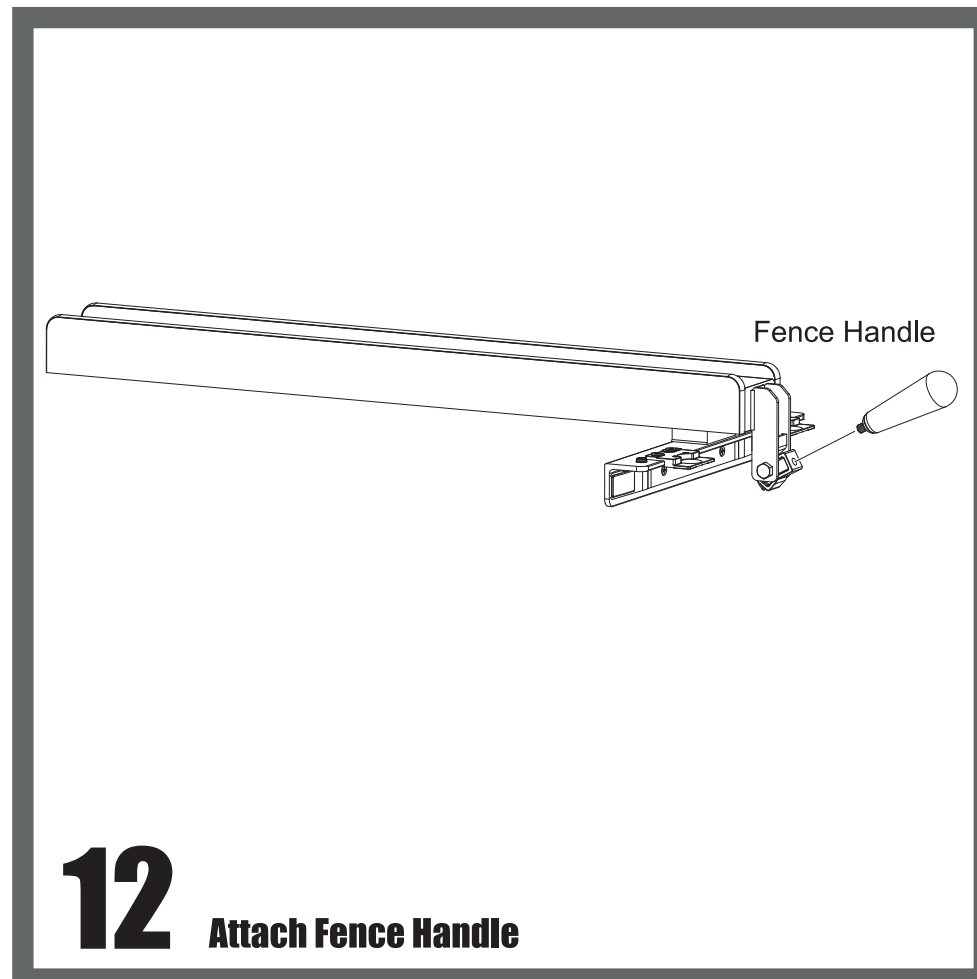
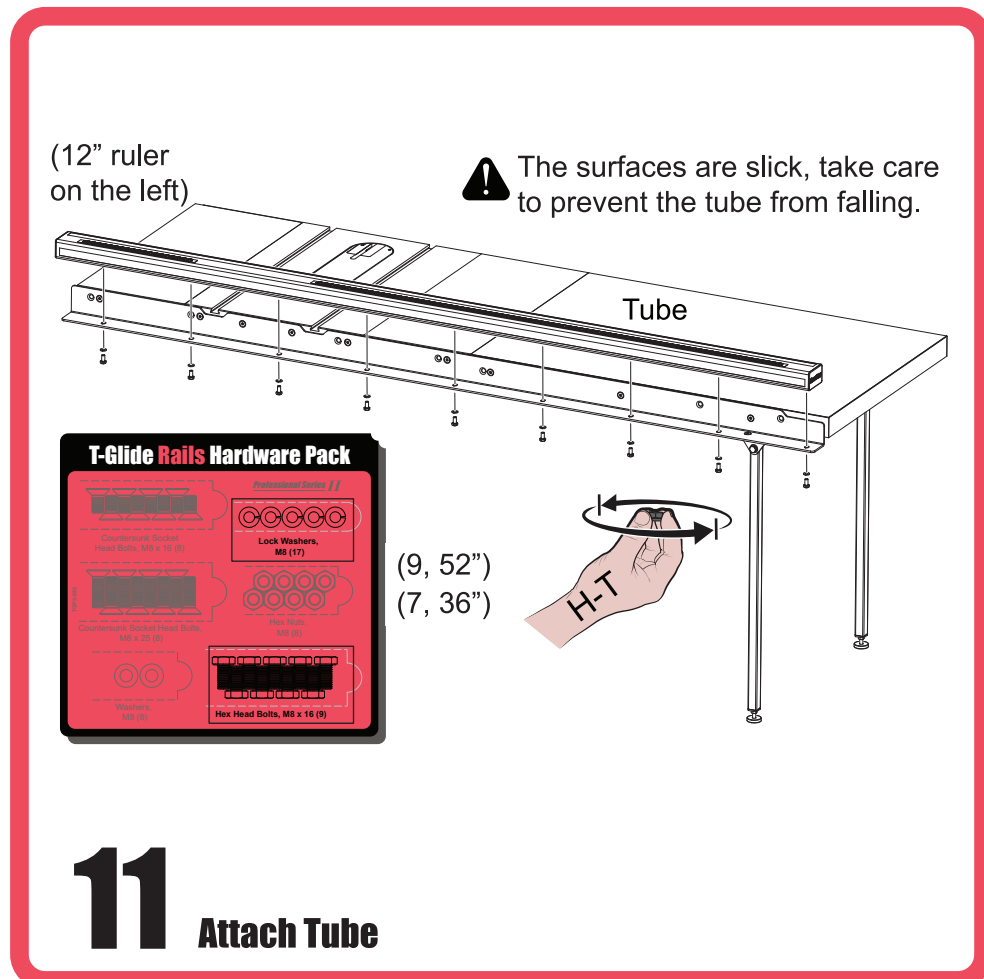
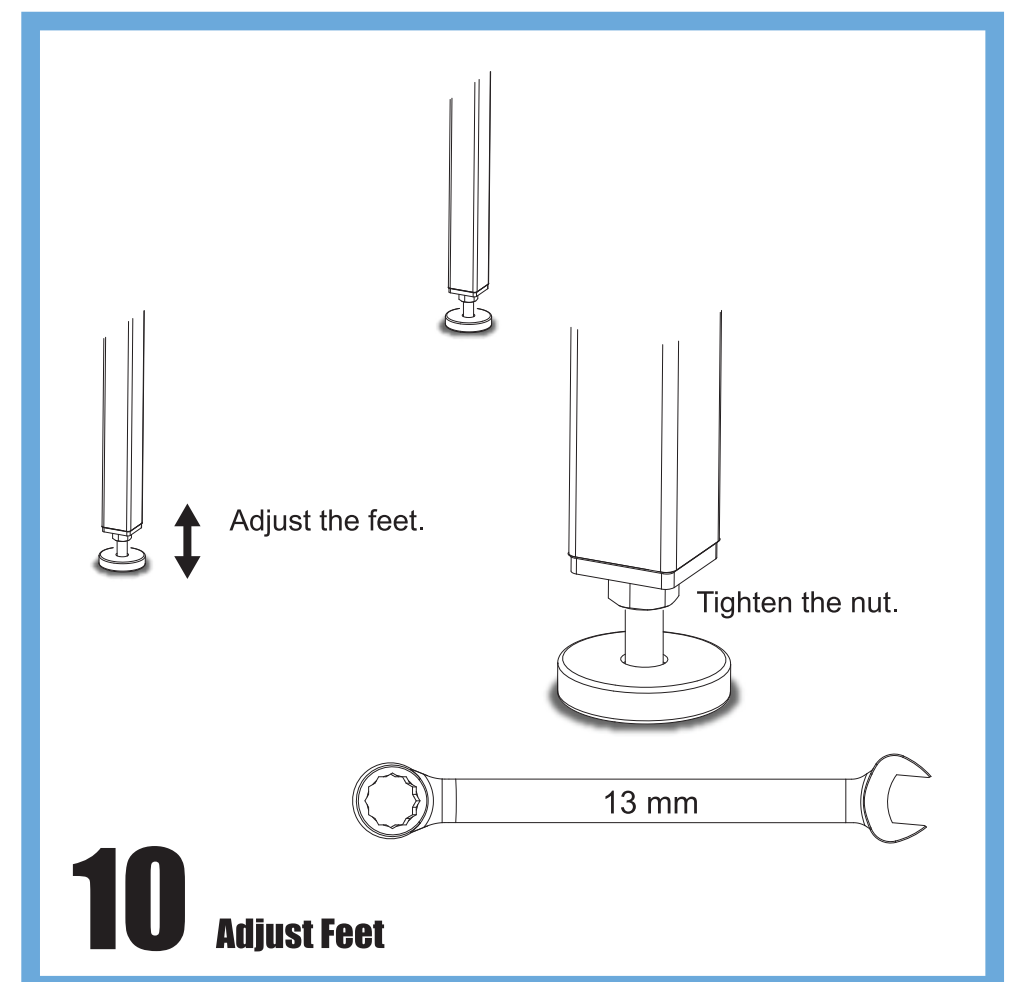
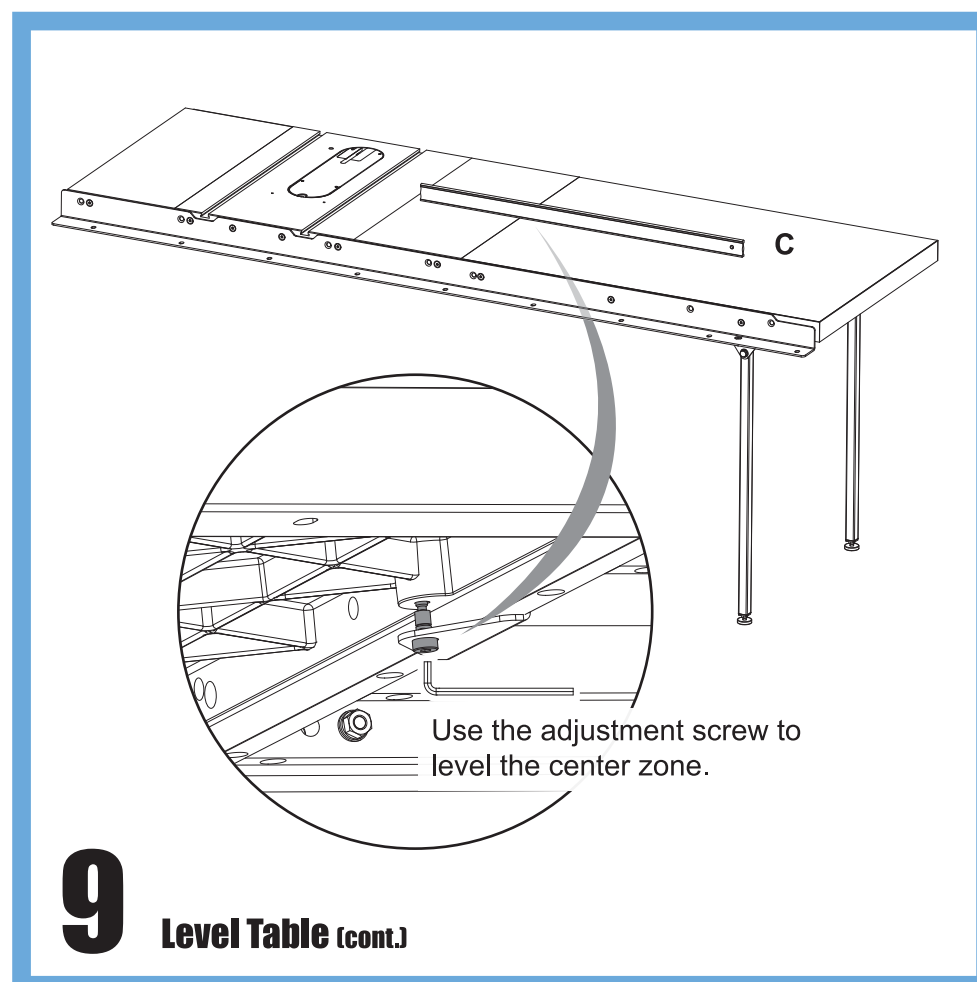
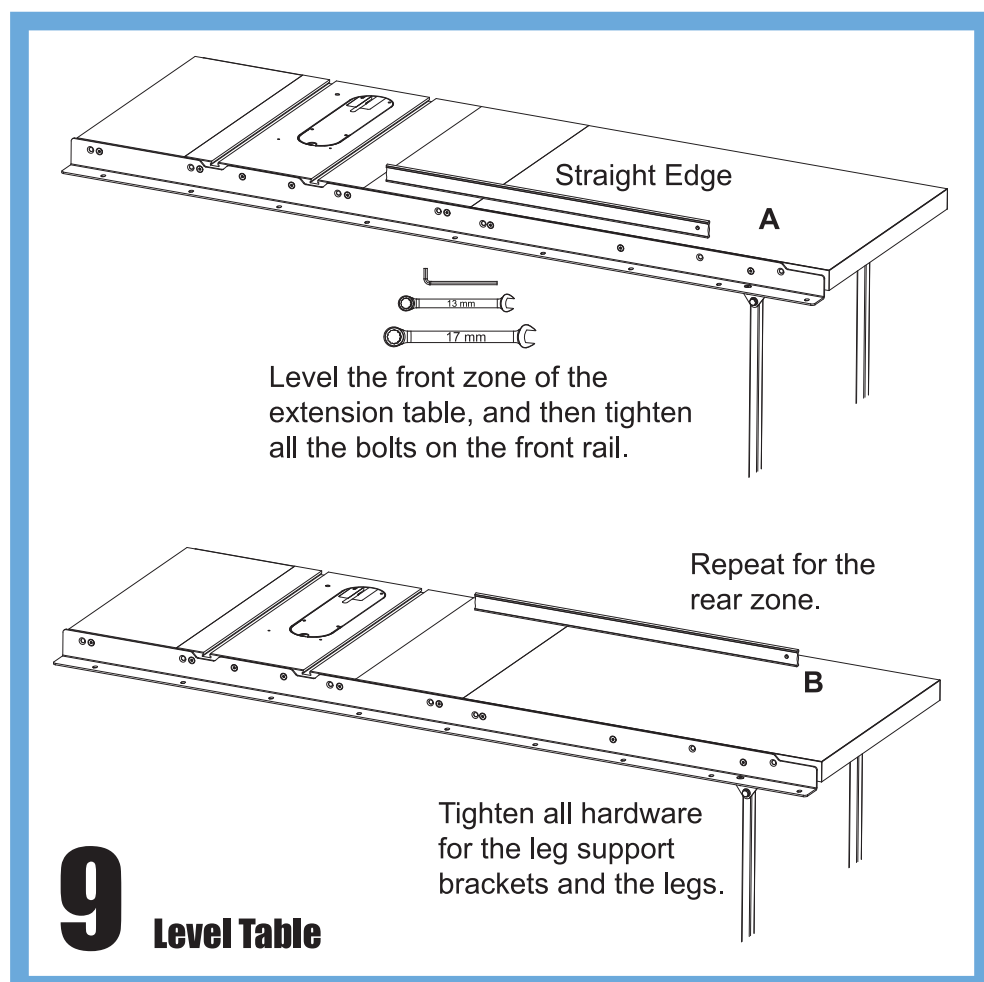
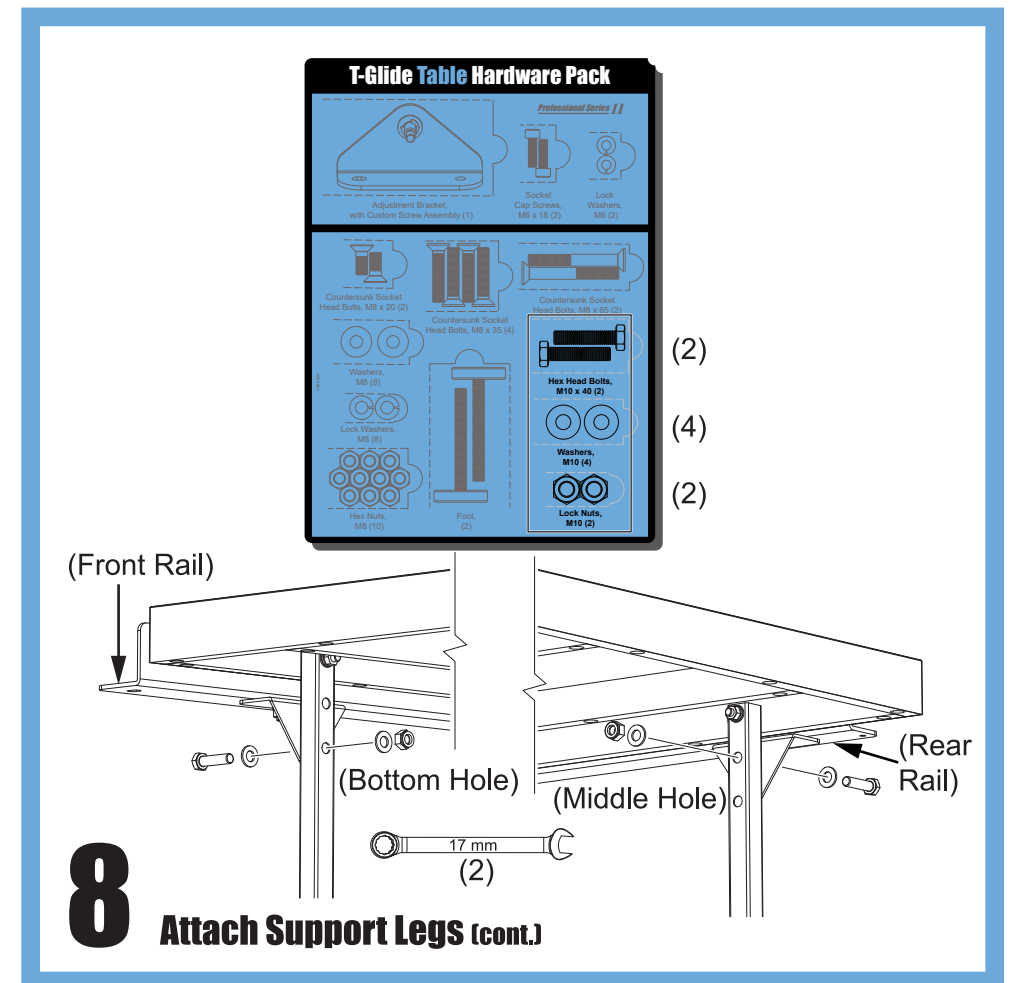
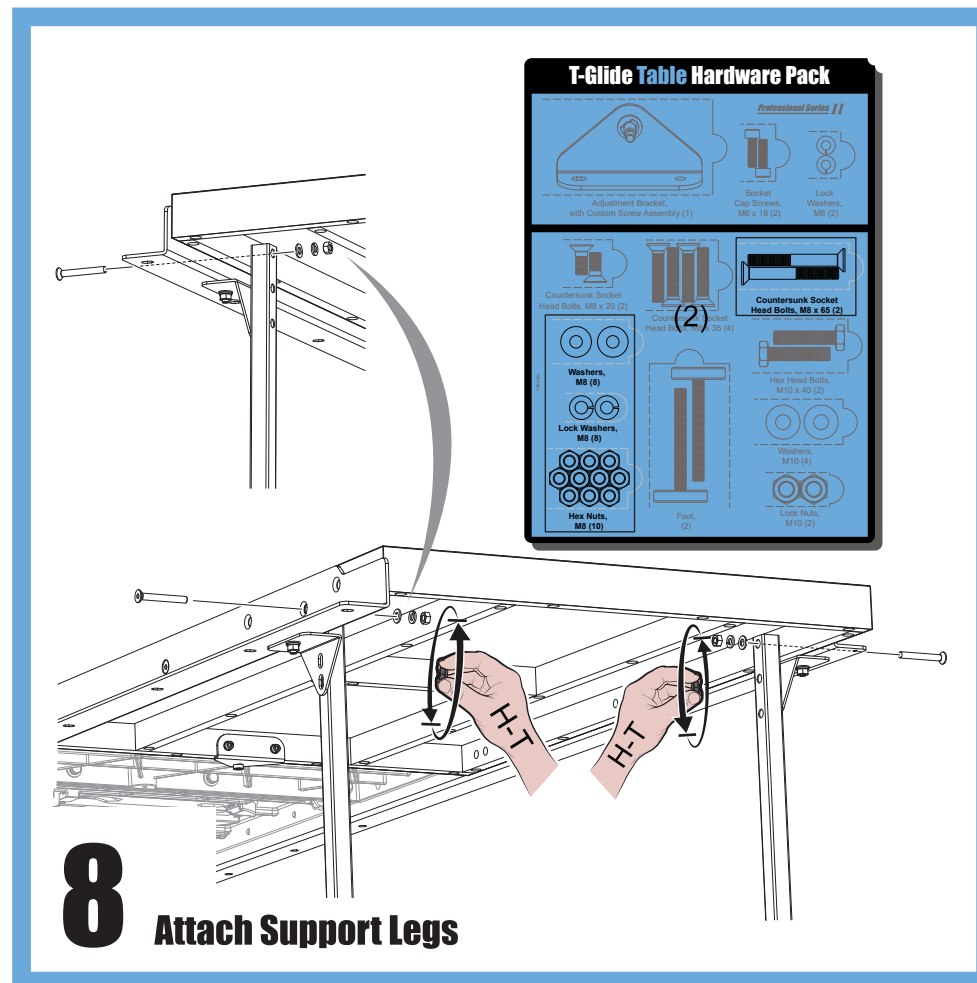
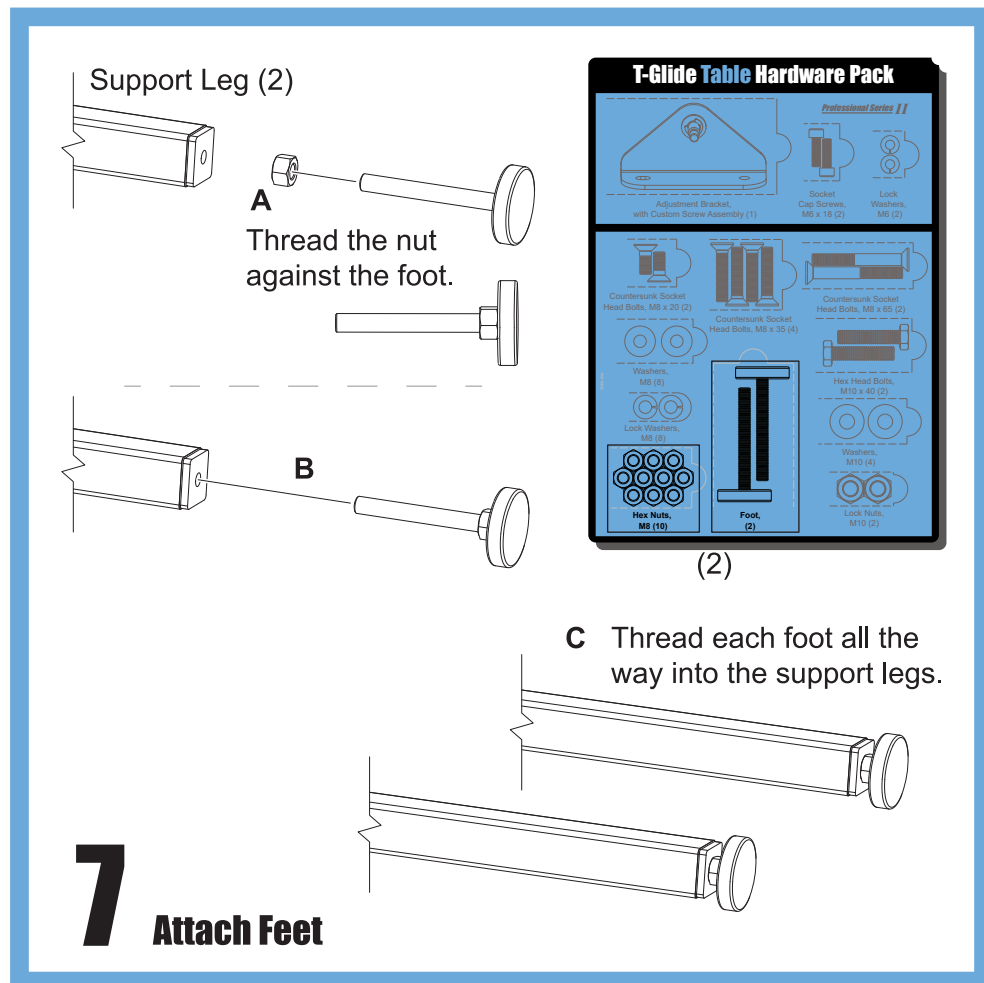
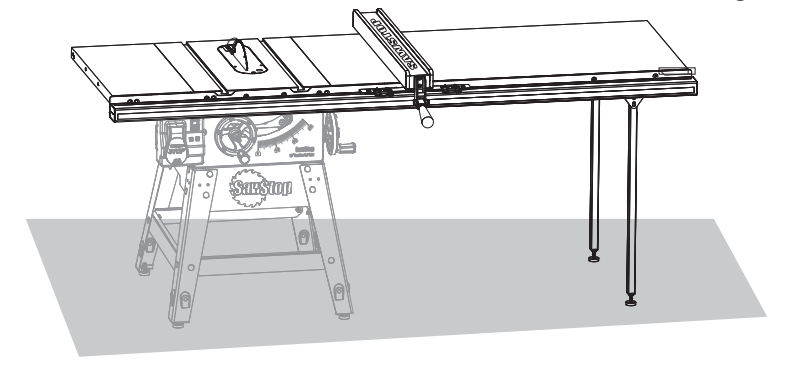
T-Glide Table Hardware Pack

(2, 36")
(4, 52")

Flip to
Other Side



Installing Your T-Glide™ Fence System on Your Contractor Saw



SawStop Service
Department
503-582-9934

www.sawstop.com

© SawStop, LLC

See your T-Glide Fence System-Professional Series II Owner's Manual for information on how to use your fence system.

There are optional accessories available for your saw, such as a mobile base or an out-feed table.